



NEW EXHIBITION AT DAVENTRY MUSEUM COMMEMORATING THE BATTLE OF NASEBY ... OUR LOCAL HISTORY

11 JANUARY - 24 APRIL 2020
COMMEMORATING THE BATTLE OF NASEBY: 375 YEARS DAVENTRY'S PLACE IN THE CONFLICT
DAVENTRY MUSEUM
OPENING TIMES
TUES - FRI 9.30-13.30
FIRST SAT OF MONTH 10-16.00
SAT OPEN DAYS: 11 JAN, 1 FEB, 7 MAR, 4 APR
FREE ENTRY
Contact: 01327 301246
museum.daventrytowncouncil.gov.uk

On 14 June 1645, parliament's New Model Army fought King Charles I's army at Naseby and won. It was the decisive battle of the first English Civil War and just nights before, King Charles stayed at Daventry's Wheatsheaf Inn with his Royalist forces camped on Borough Hill.

The *Anglia Rediviva*, written by Joshua Sprigg in 1647, a "history of the motions, actions, and successes" of Sir Thomas Fairfax's New Model Army, describes the route taken by the army during their march to Naseby. They approached from Cold Ashby via "Guilesbury" (Guilsborough) where they had stayed for one night on 13 June 1645, after almost certainly passing through Brington, East Haddon, Ravensthorpe and Coton. Indeed, several days earlier it was reported that fifty sheep and lambs had been taken from Ravensthorpe and Teeton. On Saturday 11th January 2020

Daventry Museum's exhibition *Commemorating the Battle of Naseby: 375 years. Daventry's Place in the Conflict*, opened to a huge number of visitors. The exhibition is a collaboration with The Naseby Battlefield Project, the first of a number of activities planned in the run up to the 375th anniversary.

Many items in the exhibition are on display for the very first time, including archaeology from the site like a 'love token', playing dice and coins. Other exhibits include original armour and swords, contemporary paintings of soldiers and views of the battle itself. One highlight, Fairfax's campaign cup and flask given to him by Cromwell, is on loan from The National Civil War Centre, Newark.

Daventry's exhibition is open until 24th April (Tuesday-Friday 9.30am-1.30pm) plus the first Saturday of every month (10am-4pm) when reenactors from the Sealed Knot will attend. Throughout the exhibition's run there will be plenty of activities for younger visitors. Check the museums website www.daventrymuseum.org.uk or the Facebook page for updates.

Inside this issue:

<i>Cold Ashby</i>	P3
<i>Cottesbrooke</i>	P4
<i>Creton</i>	P5-8
<i>Guilsborough</i>	P9-12
<i>Hollowell</i>	P13-15
<i>Thornby</i>	P16
<i>Church</i>	P17-18

What's On February:

- 8th - Creton Walking Group
- 8th - Coffee Morning, Hollowell
- 10th - PC Meeting Guilsborough
- 12th - Creton WI
- 13th - Speakers' Corner, Ravensthorpe
- 17th - WI Guilsborough
- 20th - FOSM History Group, Creton
- 21st - Hopewell Meeting, Hollowell
- 25th - Shrove Tuesday
- 28th - Hollowell Hens Wine Tasting

March:

- 8th - Rev'd Chris Peck's last service, Guilsborough
- 8th - Point to Point Races - pony races 1pm, horses 2pm, Guilsborough
- 9th - PC Meeting Guilsborough
- 11th - Creton WI
- 14th - Creton Walking Group
- 16th - WI Guilsborough
- 19th - FOSM History Group, Creton
- 20th - Hopewell Meeting, Hollowell
- 20th - Hollowell Hens Bring a Board Game.
- 21st - Lent Lunch Guilsborough
- 21st - Breakfast in Cold Ashby
- 22nd - Mothering Sunday
- MMM—Monday mornings Guilsborough



HAYLEY CLARK
acupuncture

Treating the person not just their symptoms

Patients seek acupuncture to address a wide variety of conditions including:

Stress - Anxiety - Menopause - Musculoskeletal aches and pains - Insomnia - Arthritis - Migraines - Side Effects of Cancer Treatments - Fertility - Weight Management - Mental and Emotional Wellbeing

Find out more with a FREE 20 minute initial consultation

Professional Licentiate in Acupuncture. Based in Creaton

Call/text: 07598 354586

Email: hayleyclarkacupuncture@gmail.com

www.hcakupuncture.co.uk



British
Acupuncture
Council Member



Can an Osteopath help you?

Osteopaths don't just treat back pain – we can help with pain related to pregnancy, pelvic pain, sports injuries, neck pain, recurrent headaches, joint pain, sciatica and other nerve problems. Patients have also found osteopathy helpful for digestive issues, circulatory problems, neuralgia, sleeping problems amongst many others.

Call now to discuss your symptoms with one of our experienced Osteopaths

BRIXWORTH
OSTEOPATHIC CLINIC
PART OF THE APOLLO HEALTH GROUP



No need to wait. You can be seen within 24 hours. Call now or visit www.brixworthosteopathy.com
Quote V1.2016 to receive 10% off your initial consultation

01604 889241 | info@brixworthosteopathy.com

Brixworth Osteopathic Clinic, Catherine House, Harborough Road, Brixworth, Northants. NN6 9BX

The Witch & Sow

GUILSBOROUGH

The Witch & Sow traditional country pub and restaurant in Guilsborough is your perfect venue be it for a great drink or quality fresh food.

01604 743888

WWW.THEWITCHANDSOW.CO.UK

VILLAGE LINK

is a bi-monthly publication delivered free of charge to households in Cold Ashby, Cottesbrooke, Creton, Guilsborough, Hollowell, Teeton and Thornby. It is produced and distributed by volunteers. Due to restrictions of time and space there is no guarantee that copy submitted will be used. All funds received from advertising go towards printing costs.

Editorial team:

Andrea King 01604 740670
Angela Hubbard 01604 740379
Tony Hart 01604 740535
Sarah Dalzell 07917 608238
Katie Fulcher 07747 604067
Eve Wooldridge 07711 335771
Richard Hollingum 07887 652599
Mark Revitt Smith 01604 740240

Wherever possible **please email** your contributions to: editorial@villagelink.org.uk. This saves considerable time re-typing information! When providing hard copy materials, please post to Angela Hubbard, The Old Sun, High Street, Guilsborough.

Advertisements are welcome from local businesses, charities, clubs and societies. Commercial businesses pay advertising rates. One insertion: full page £140, half page £70, quarter page £35, eighth page £20. Two or more insertions: full page £120, half page £60, quarter page £30, eighth page £15. All prices are per insertion. Colour available in some issues, price on application. Private ads are also welcome. Back page 'lineage' cost £1.50 per line. Please contact Angela Hubbard on 01604 740379 to book advertising or email: advertising@villagelink.org.uk. Cheques payable to 'Village Link'

DEADLINE FOR NEXT ISSUE:
Friday 6th March 2020

Disclaimer: the publishers cannot be held responsible for any errors or omissions. They cannot be held accountable for the accuracy of advertisements appearing in this newsletter, nor for editorial information sent to them or published by them.



NEW OUTDOOR GYM NOW AVAILABLE

Cold Ashby Playing Fields Association has now added a small outdoor gym to our facilities on Stanford Road, Cold Ashby. This is open to everyone who is 14 years and over. It is situated close to the children's playground thus offering carers the opportunity to have a little exercise while still able to keep an eye on the children.

You could use this as part of your workout while also taking advantage of the 1/2 mile exercise track marked around the perimeter of the playing fields for a healthy jog.

Our brand new outdoor gym is available to use now; so here's hoping the sun comes out!

We would like to thank Cold Ashby Parish Council, Daventry District Council and the Winwick Wind Farm Fund (administered by Northamptonshire Community Foundation) for their financial support.

GOLF CENTRE CONFIRMS NEW MEMBER-OWNED RELAUNCH

Cold Ashby Golf Centre is now alive and kicking! It is owned by the members, managed by the members for the members. Still open to and welcoming visitors. Individual, family or corporate membership available and fantastic sponsorship opportunities too! Get in touch if you're interested on 01604 740548.



Cold Ashby Breakfast

St Denys Church - 21st March - From 9am



IT'S BACK! Join us for sausage sandwiches, croissants and hot drinks at St Denys Church, Cold Ashby on Saturday 21st March.

The breakfast is completely FREE (although any donations towards the upkeep of St Denys will be greatly appreciated!) Bring your friends and family and explore our lovely church.

We are also collecting for our local Food Bank. We welcome any non-perishable items such as tins, packets and sanitary items. **See you on Saturday 21st March!**

St Denys Church, Cold Ashby

COTTESBROOKE NEWS



These pictures from Steve Nicholas perhaps illustrate the variable weather we seem to be experiencing more often. Recent rains have filled spaces other than the rivers and streams but there were good days last summer when balloons could take to the air. The pair of Green Woodpeckers is a beautiful but rare shot.



J.M. BILLINGS

PLUMBING & HEATING ENGINEER

OVER 30 YEARS OF EXPERIENCE

OIL AND GAS SERVICE, INSTALLATION AND MAINTENANCE
BATHROOM AND UNVENTED HOT WATER INSTALLATIONS

FOR FURTHER INFORMATION OR TO ARRANGE
A NO OBLIGATION QUOTATION PLEASE CONTACT JIM ON:

M 07810 800876

T 01604 743622

E JIMBILLINGS@ROCKETMAIL.COM



BASED IN HOLLOWELL



COTTESBROOKE CORRESPONDENTS

If you have a story or a picture that would be of interest to your fellow villagers and neighbours, please get in touch and we can send out our roving reporter!

You can contact us by email editorial@villagelink.org.uk or you can phone Richard Hollingum on 07887 652599

CREATON SINGERS



What a busy Christmas season it was for the Creaton Singers!

In early December the Singers were at the Christmas Tree Farm in Welford, adding to the festive atmosphere. It was wonderful to see so many happy faces as people joined in the singing. One small boy requested 'The Twelve Days of Christmas' and joined in the whole 12 verses and knew all the words! It is always a great start to the Christmas season.

This was followed by the traditional carol singing on the Green and around the village of Creaton, followed by a concert in the village hall. Many thanks to everyone who generously contributed to the voluntary collection for the Salvation Army, which was much appreciated and raised £224.

Just before Christmas the Creaton Singers were delighted to be invited to put on a concert in Kissingbury church to raise funds for the church's tower. The photo shows the singers in full voice. It was a jolly evening with a very appreciative audience.

With Christmas sadly behind us, the Singers are turning their attention to Spring and learning new songs for forthcoming performances.

If you enjoy singing and are interested in joining this friendly group, we meet at the URC in Creaton High Street every Tuesday from 7.30pm to 9pm.

UNITED REFORM CHURCH

Minister: Rev Elizabeth Kemp

You are warmly welcome to join us for our Sunday Worship and Junior Church.

February 2020

	Service	Led By
2nd 11am		Jon Heard
9th 11am		Rev Elizabeth Kemp
16th 11am	Worship & Holy Communion	Rev Elizabeth Gray-King
23rd 11am		Wendy Pittman

March 2020

1st 11am		Lindsey Cole
8th 11am		Rev Elizabeth Kemp
15th 11am	Worship & Holy Communion	Rev Geoff Townsend
22nd 11am	Mother's Day	Suzie James
29th 11am	<i>Joint Pastorate (venue TBA)</i>	

The Ministers, Elders and Members of Creaton United Reformed Church wish you a joyous Christmas and best wishes for 2020.

POPPIES COFFEE SHOP is open daily from 9am to 12 noon Monday, Tuesday, Wednesday and Friday. All welcome.

CREATON WI

We meet at the United Reform Church in the High Street at 7.30pm on the second Wednesday of the month. If the meeting is to be held at a different venue this will be stated.

February 12th Street Pastor by Merrick Baker-Bates

March 11th Millicent Fawcett. Why she deserves her

statue in Parliament Square by Alan Marchant

April 8th Ration to Fashion by Patricia Heed

We welcome you either as a guest or a new member. Come along to meet old friends or make new ones.

Please contact Daphne on 01604505546 for more information.



Learn to drive
with

MERRICK
School of Motoring
est. 1980



Merrick Bowles, DSA ADI

01604 740138

Towing instruction also available.

Creton Parish Council Contact Details:

Parish Clerk: You can contact our Parish Clerk for Creton Parish Council, Katrina Jones on cretonpc@gmail.com or by telephone on 01604 740862.

Agendas and minutes of meetings are available on the village website www.creaton.org.uk



Find us on Facebook

As you will be aware we meet bi-monthly with the exception of Planning Meetings. Meetings are held at Creton Village Hall, Teeton Lane, Creton at 7.30pm. The first 15 minutes is reserved for the public forum.

Parish Council Meeting dates 2020:

Tuesday, 10th March, 12th May, 14th July, 8th September, 10th November.

Planning Applications:

- DA/2019/0271 (Amended): Remodelling and extension of existing dwelling: 3, The Green, Creton, Northamptonshire, NN6 8ND

Please look on the Daventry District Council website for Planning Applications

Appeal for DACT Drivers

Daventry Council runs a scheme to enable people who are not able to drive, to access medical appointments. This scheme needs volunteers most urgently. Drivers are given a car allowance and are able to decide which transport they are able

to provide.

It is a lifeline for residents.

The service also offers a minibus scheme for group hire for non profit groups, including village travel clubs and for DACT days out including pub lunches and seaside trips.

As a volunteer you can do as much or as little as you like but whatever you can offer means so much to the people needing some help.

More information can be found at info@dact.uk.com or by telephoning 01327 701665/6/7 open 9 am to 5 pm Mon. to Thurs. and to 4.30 on Friday.

Invitation to Tender for Grass Cutting Contract 2020 – 2022

Creton Parish Council invites tenders to cut the grass in the village of Creton for 2020, 2021 and 2022, with an option for the Parish Council to extend this for a further year.

Two separate tenders are sought: one to carry out the grass cutting of verges in the parish and one to carry out grass cutting in the closed churchyard and burial ground. Additional items will be required such as weed control and hedge cutting.

Please apply to the Parish Clerk for a tender pack at cretonpc@gmail.com giving your name, address and telephone number.

You must carry sufficient Public Liability insurance, Employers' Liability insurance and a NPTC Certificate of Competence in the use of pesticides. Evidence of these must be provided with your tender.

The closing date for returning tenders to the Parish Clerk is **3rd March 2020.**

Bus Service

There is a UNO bus service from Monday to Friday between Northampton and Market Harborough. Bus stopping places are at the end of The Jetty, the Lych Gate, and outside the shop for trips towards Northampton, and opposite the shop for journeys north and to Market Harborough. On the return journey bus drivers will stop at any place requested.

It is a good, friendly service which needs to be used. A bus timetable is displayed in the shop or can be found online as the number 60 and 59 service.

The Parish Council has agreed to continue supporting the bus service by making another financial contribution for the next financial year to ensure the service keeps running.

Mondays to Fridays except public holidays	
	60 60 60 60
Northampton North Gate Bus Station bay 3	0740 0900 1430 1735
Kingsthorpe Waitrose	0750 0910 1440 1745
Chapel Brampton Cedar Hythe	0757 0917 1446 1751
Spratton Brixworth Road	▼ 1451 1756
Spratton Main Road	0801 0921 ▼
Creton The Jetty	▼ 1455 1800
Creton main road	0805 0925 ▼
Hollowell bus stop	0808 0928 1458 1803
Gullesborough bus shelter	0812 0932 1502 1807
Gullesborough Academy	(0814) ▼
Thornby bus shelter	▼ 0937 1507
Cold Ashby bus shelter	▼ 0943 1513
Naseby phone box	▼ 1517
Welford bus shelter arrive	▼ 0953 1527
same bus, no need to change	
Welford bus shelter depart	0955
Naseby phone box	1005
Clipston The Green	1010
Sibbertoft Berkeley Street	1018
Marston Trussell	1023
Lubenham The Green	1027
Market Harborough Market Hall	1040
this bus shows route 59 between Welford and Market Harborough	
this bus goes to Gullesborough Academy on school days only	

Mondays to Fridays except public holidays	
	60 60 60 59 60
Market Harborough Market Hall	1255
Lubenham The Green	1305
Marston Trussell	1309
Sibbertoft Berkeley Street	1315
Clipston The Green	1322
Naseby phone box	1327
Welford bus shelter arrive	1337
same bus, no need to change	
Welford bus shelter depart	1025 1340
Naseby phone box	1035
Cold Ashby bus shelter	1039 1350
Thornby bus shelter	1044 1355
Gullesborough Academy	▼ (1543)
Gullesborough bus shelter	0706 0820 1050 1401 1545
Hollowell bus stop	0709 0823 1053 1404 1548
Creton main road	0712 0826 1056 1407 1551
Creton The Jetty	▼ 1058 ▼ 1553
Spratton main road	0716 0830 ▼ 1411 ▼
Spratton Brixworth Road	▼ 1102 ▼ 1557
Chapel Brampton Cedar Hythe	0720 0834 1108 1415 1603
Kingsthorpe opp Waitrose	0726 0840 1114 1421 1609
Northampton North Gate Bus Station	0735 0851 1122 1429 1619
this bus shows route 60 between Welford and Northampton	

WINTER THOUGHTS

One advantage of these shorter days is that you don't have to be up very early to get out and catch the sunrise. There is something special about being up and out whilst the rest of the world are laying in their beds, fighting with their alarm clocks and wishing for another five minutes under the covers. It is dark but with the promise of light to come. On the eastern horizon a faint glimmer of light, a line so thin that it is hardly perceptible. As you just get used to it being there you are aware that it has changed. The dawn is impermanent, transient. Perhaps we are always drawn to it (and sunsets) because it is fleeting; moments of colour and joy that change all the time and then are gone.

On a clear cold morning at this time of year, the frost in the air adds an extra clarity that you don't get in warmer days. The thin line has become a red gash. The red expands into orange and then spreads into yellow. Above the ball at the centre, a special form of blue spreads out, a blue of crisp, hard, sharp steel, the colour of cold if there ever was one.



The yellow ball moves quickly to establish itself. It does not rise straight up but slides as if rolling along the edge of the land gathering energy from it to get bigger and brighter. It is the winter. It is the early morning. It is quiet except for a light rustle in the trees as the breeze wakes up and starts to cut the air. This gentle wash is loudly interrupted as a fight breaks out in a bush. Two male blackbirds are arguing. Over what is not clear but I suspect it is over territory and food. After a short spat one flies off and peace is restored. Overhead, a buzzard slides through the icy air, looking for thermals that are not there, and for breakfast, which is.

When we think about this time of year, we remember the highlights. Of childhoods filled with snow, of crispy, crunchy footfalls, and of damp clothes and hot drinks. Memory is a wonderful thing, especially as it builds a picture that is not always true.

The end of the day is dull. the brightness of the morning is now a memory and the light that was so bright then is fading fast even though the working day is far from over. On the feeders birds are topping up for the coming long cold night: chaffinch, green finch, blue tit, coal tit, great tit, all searching

for the right seed, throwing what they don't want out of the way. This is good news for the blackbirds, for the dunnock and for the wood pigeon that move around the base of the feeders, eating anything that comes their way. There is stiff competition at the moment though. The cold has brought a family of wood mice to shelter under a raised planter and they dash out, collect seed and dash back, hoping that they have not been noticed. One of them gets more fearless and strays a bit further. Rich pickings right under the back feeders but further from safety. The little brown mouse sits, nibbling. A waddling pigeon wallows into view. He looks at the mouse; the mouse looks back. Both carry on eating. Something startles the birds above and they fly off; the mice run for cover. The pigeon says it will just eat that bit over there - and there - and there - and... It might fly away, it might not.



WillsDirect

Thinking About Your Future

Will Drafting Service

**There is one important job you've
been meaning to do for years... Make a
Will!**

Wills Direct Northampton has been established since 1993 offering a professional, expert Will Writing Service to people throughout Northamptonshire and the surrounding area. With Wills written for over 12,000 people, Wills Direct can help you to write your Will simply and quickly with our affordable FREE HOME VISIT SERVICE.

Telephone. **01604 505170**

or email info@willsdirectnorthampton.co.uk

www.willsdirectnorthampton.co.uk

1 Judges Court Creaton Northampton NN6 8NS

CREATON NEWS

OVER THE COUNTER Tales from Creaton Village Shop

Well Christmas came and went and although this may have been the shop's second Christmas it still felt like the first. I suppose that every Christmas in a business will always feel different - and new. I am told that the shop even crossed a major target with its daily takings so all those turkeys came in handy.

The volunteers have been extremely supportive over the Christmas and New Year period as the shop has been open on some occasions after the Post Office closed for the day. January is always the down-time month but people still have to eat (Ed: and drink!) and business has been brisk into the new year.

Just before Christmas the shop said a formal goodbye to Andy Fox, one of the Post Office team. Andy, pictured (left) below with Operations Director Simon Robinson, is moving on to other things but we hope he might return as a volunteer in the shop in the near future.



Creaton in Bloom

Save The Date

Sunday June 7th

CREATON WALKING GROUP



Happy New Year from the Creaton Walking Group! If your New Year's resolution is to get fitter then walking could help you!

We meet at Creaton lychgate at 10am on the second Saturday of the month and walk for about 8 miles, followed by an optional pub lunch.

Despite the wet weather, the recent walks have been very enjoyable over beautiful countryside both in Northamptonshire and over the border in Leicestershire.

The December walk via Peatling Magna and Peatling Parva ended with a delicious lunch at The Joiner's in Bruntingthorpe. New Year's Day walk from Creaton went to Maidwell and Haselbech and January was around Walgrave and Old.

Well-behaved dogs are always welcome and good walking boots are essential during the winter months!

Next walks are on:

- Saturday 8 Feb
- Saturday 14 March
- Saturday 11 April

FRIENDS OF ST MICHAEL'S HISTORY GROUP

20th February: **The life and crimes of Agatha Christie** - Steve Dimmer

19th March: **King Edward II and Queen Eleanor in Northamptonshire** - Mike Ingram

Talks take place in St Michael's Church and start at 7:30pm. They last approximately 1 hour and are followed by complimentary refreshments.

**No room in the garage
or the attic?**



**Rent storage space by the week or
for as long as you need**

Archive Documents

House Contents

Business or Domestic

Tel 01604505050

email: George@Loc-Box.co.uk

Loc-Box Self Storage Creaton Northants

www.Loc-Box.co.uk

GUILSBOROUGH NEWS

MMM



Monday Morning Meet
Guilsborough Village Hall

9 – 11am every Monday (excluding Bank Holidays)

All welcome baby – OAP's.

Baby & toddler toys for youngsters

Meet for a chat, coffee/tea, cake.

Only £2/adult - includes refreshments. Children free.

For more information contact: Janet 01604 740640



GUILSBOROUGH TENNIS CLUB

Guilsborough Tennis Club at Guilsborough Academy is looking forward to lots of tennis this Spring and Summer. We had a very successful first year, with the Open Morning in May and the one-off membership for school summer term bringing in more families, meaning that we doubled our membership to 44 to include players of all ages and experience.

The funds we raised at the highly entertaining Race Night in October will go towards coaching for children and adults in the summer and to promoting tennis in Guilsborough.

Members can play tennis in daylight, out of school hours (primarily weekends and school holidays). We have a Club Night on Tuesday in Winter (with lights), and on Monday in the Summer, and Club Mornings on a Sunday.

Summer Membership is from 1st April to 31st August (£40 Adult, £25 Student/Child, £80 family).

If you're interested in playing tennis, please contact Sarah Dalzell on 07917 608238 or email SarahDalzell57@gmail.com



theWI

INSPIRING WOMEN

February 17th – CREATIVE Writing

March 16th WINE TASTING

April 27th "Macarons or Macaroons" Maison Der Macarons, how to make the perfect Macarons.

Meet new people and have a fun packed evening with women in Guilsborough and the neighboring villages

Time - 7.30pm for 8pm start, at the Witch & Sow unless stated. Bar is open, tea/coffee complimentary after the speaker. (Bring your own Mug). Visitors welcome, £5 per meeting. We normally meet in the Restaurant/top bar unless an event requires more space and then you will find us in the function room at the back of the pub.

For more information about our group - Caroline Collins 07980-809002 or Secretary Many Manning 07969-884713

Neighbouring parish ladies, all welcome.

Meetings held at the Witch & Sow the 3rd Monday of every month unless avoiding clash with school holidays.



Welcome to:

Lyndsey Clements and James Trusler, who moved into Well Lane in January. We hope you will enjoy living in Guilsborough!

CAROL SINGING THANK YOU

A big thank you to everyone who came out to sing in December and to all who donated.

We combined collections with MMM and Brunch at 11 and were able to send a cheque for £200 to The Hope Centre in Northampton (the Centre provides help for the homeless).

The Christmas tree on The Green was a success again this year, if anybody would like to be involved with the tree next year please contact Katie Fulcher 07747604067 or Sue Needham.



GUILSBOROUGH NEWS

JUNIOR FOOTBALL

West Haddon Junior Football teams continue to play on the new football pitch at Guilsborough Playing Field. The incessant rain has not prevented 11 home games by the two under 11s teams and 6 home games by the under U12s. However, although there is a drainage system at the Field that was installed in 2000 plus the Field has been slit to encourage water to permeate downwards, the pitch needs some respite from the inclement weather. Many other clubs have had to cancel games because their pitches are too messy and waterlogged, in part because of the wet weather, Brixworth Junior Football Club have asked to use our pitch when not in use, which we have agreed to. It is also good to see the Field being used by many children from the village and senior school, plus parents and their children, who use the portable football practice goals left out at the Field.

GPFA AGM

This year's AGM will take place sometime in March 2020 as some of the key committee members are not available until then. The current Chairman, Simon Smith, has signalled that he would like to stand down after 4 years as Chairman. Simon has enthusiastically led and supported the GPFA through a challenging period, and has raised significant funds for the GPFA. Hence we are appealing to those in the village who believe that they can fulfil this role and be at the helm and steer the GPFA's future direction. Their role in General Committee meetings is to oversee the business of the meeting and to keep order amongst members. They have overall control, give direction, keep focus and give structure. Please contact the GPFA Secretary for further information.
Graham.Byars@hotmail.com.

GROUND, CRICKET SQUARE AND EQUIPMENT MAINTENANCE

The GPFA is a charity and must meet its objects, one being to ensure that it spends money wisely and efficiently. Consequently the GPFA in late 2019 prepared a detailed specification of the annual work needed at the Field, and asked 3 contractors to quote for 3 components of expenditure relating to the Ground, Cricket Square and Equipment. The outcome of this exercise was that the existing contractor R&G Ground Maintenance of East Haddon are to continue to maintain the Ground (mowing, strimming, weedkilling, fertilising, vertidrainage, slitting, hedge trimming) and Equipment (Cricket Roller, lawnmowers, line markers), and that Thompson Ground Care Ltd. of Guilsborough are to maintain the cricket square. The total cost of all the work needed is close to £6,000 p.a.



village sport & recreation

VE DAY CELEBRATIONS



As part of the Guilsborough's V.E. Day celebrations the GPFA will be hosting village organisations at the Playing Field on Bank Holiday Friday afternoon, 8th May 2020, the 75th Anniversary of Victory in Europe. As part of a shared moment of national celebration of peace, that emerged after nearly six years of war, it represents an important milestone in our history. The British Legion and GPFA believe that this event should not pass without reflection and celebration. Guilsborough's celebrations will be replicated across the country over three days of the Bank Holiday weekend starting on Friday 8th May.

Celebration at the Guilsborough Playing Field on Friday 8th May from 1pm to 5pm to include:

Meet the veterans, attendees to be encouraged to dress in 1945 attire, "ration books" tickets for various stalls, entrance fee, lunch for children and adults, W.I. "Street Party" lunch and traditional high tea with long trestle tables, bunting, children's activities, many stalls, licensed bar, games and more. Two marquees and several gazebos will be erected at the Field by the GPFA.

A NEW CRICKETING FORCE

This summer is an exciting season for cricket in Guilsborough as the new local club "Haddon CC" plays its inaugural season. The club which combines the forces of West Haddon and Guilsborough CC and East Haddon CC will field four senior men's teams, one ladies' team and four junior age group teams as well as fun activity programmes for all ages from age 5 upwards. The new club will be able to offer social and competitive cricket to suit all ages, genders and abilities and will play and train across the three villages of East and West Haddon and Guilsborough. Indoor pre-season training for both juniors and adults is already underway, all age groups from 8 years and up are welcome. Outdoor training and the All Stars programmes for age 5-8 year olds will start in April and May. Please contact jim.houghton@olivehorse.com for more information.
<https://www.facebook.com/westhaddoncc/>.



All new players or those that want to get back into cricket are very welcome regardless of age and experience.

GUILSBOROUGH NEWS

PRIMARY SCHOOL NEWS



As usual the end of the Autumn term was non-stop at Guilsborough C of E Primary with many fun festive activities taking place! Our Nativity play by Reception, Year 1, 2 & 3 children was a real treat and I'm so proud of everyone

involved for their first-class performances. They even performed to residents of the New Wycliffe Care Home, who travelled in all the way from Leicester. The residents certainly left the performance with huge smiles on their faces. I'd like to thank all those involved in putting this perfect production together.

We are very thankful to the PTA and parents who joined us for our 'Festive Friday' event. The children really enjoyed seeing Santa and I hear the special sparkly biscuits and reindeer food put a magical smile on all faces. We also had some of our children running their own stalls, raising money for charities such as 'Rainbow Trust Children's Charity' and 'Northampton Hope Center'. Well done Chloe, Lucy, Ella and Lily for your dedication to these super charities.

Our Year 6 children organised a Senior Citizens Christmas Party where they entertained their guests with a show of dancing, singing and even balloon animal making. The local community had a wonderful time and made many comments about how polite and wonderful our children are here at Guilsborough.

Also, during the Autumn term we had a parent Maths workshops with Jonathan Hughes – our fantastic Maths consultant, a visit from the author/illustrator Alex Wilmore, and although our seasonal walk was very muddy the teachers, parents and children enjoyed the adventure and exploring our beautiful surroundings once again.

We are now looking forward to all the exciting learning planned for this Spring term!

Please remember to follow us on our website www.guilsboroughprimary.co.uk, or through our Twitter profile - @guilsboroughpri.



The children enjoying the seasonal village walk



The year 6 community party



GUILSBOROUGH FESTIVAL 2020

Save The Date : It's Festival Year Once More and for 2020 the festival dates are September 18th-20th



This year's theme is an **Autumn Fair** and will include a **SHOW TENT** with displays and prizes for best Fruit, Vegetable, Crafts and Baked goods.!

Think ahead now and get your seeds and plants growing to give us a good display.

“ Could you grow the biggest carrot, pumpkin or sunflower head ?” Give it a try you may win the Prize! More details to follow in next issue.



GUILSBOROUGH NEWS

VILLAGE HALL NEWS — A HUGE THANK YOU

After more than 6 years as Chairman of The Guilsborough Village Hall Committee Mike Fulcher has stepped down from the role to become a "back bencher"

During his time as Chairman as well as dealing with all the administration and being the treasurer he has overseen the refurbishment of the kitchen and the small hall floor, the decoration of the front of the hall and resurfacing of the car park to mention just a few of his achievements and was often found popping in to the Hall to check that the floor had been swept after an event or a room was set up correctly for a forthcoming meeting. He met with users, officials and work people to ensure that our Hall was always up to scratch.

On behalf of the Village, thank you Mike for your hard work and commitment.

The new committee elected at the AGM in November are:

Chair and Treasurer - Sue O'Neil

Secretary and Invoicing - Eve Wooldridge

Bookings - Sue Needham

Members - Pam Townsend, Richard Furnell, Paul Jacobs, Richard Mumford, Mike Fulcher.

We have a fantastic Village Hall providing the venue for private parties, regular classes such as Pilates and Art or a welcoming meeting place for local people at the Sunday Brunches or MMM. If you would like to book our Village Hall please call Sue Needham on 07342 382706 or email info@guiltsboroughvh.uk.



Guilsborough in 1947—no sign of Global Warming then! As we go to print in January winter has been mild but who know what Feb and March may bring.

Photographs kindly provided by David O'Neil of the Historical Society.

PARISH COUNCIL NEWS

New Council Member. We are pleased to be able to report that we have now co-opted Sarah Harris to the Parish Council. We feel sure she will be a valuable member and offer her a very warm welcome. Sarah completes our numbers.

Precept. At our January meeting we set our Precept for the next financial year which begins in April. A Precept is a Parish Council's source of funding which is collected by Daventry on our behalf as part of your Council Tax. It became clear from the information gathered during the process of forming our Neighbourhood Plan that the vast majority of our parishioners want investment in our village facilities and so we have increased our precept this year by approximately £16.85 per year for a band D property. It is strongly recommended (if not insisted on by our auditor) that parish councils keep a reserve of 50% of their precept as an emergency contingency. This means if we increase our precept we have to increase our reserve accordingly effectively meaning we can only budget to spend half of any increase.

Our playground needs new equipment, which is very expensive. Whilst we aren't yet in a position to be able to apply for any funding grants, they are never 100% funded and we have to make preparations and provision to be able to contribute towards their cost.

We are still working toward resurfacing the tarmacked area in front of the village hall. It is in a very poor state of repair and

we don't want it to become a danger to pedestrians. Proof of ownership is proving to be a very long winded process (so far the only definite is that it doesn't belong to Highways) but progress is being made and there is light at the end of the tunnel!

If we want to retain the bus service that some of us depend on then we will have to make a significant contribution again, as we did this current year.

There's still the uncertainty of just which services the County Council can afford to fund and which we might have to fund ourselves if we want them to continue. Examples of this are drain cleaning and road sweeping, with the former currently only happening if there's flooding of property and the latter best described as rarely, if at all.

Good Neighbours Schemes.

Daventry District Council are currently offering funding of up to £1,000 towards the setting up of a Good Neighbours Scheme. These schemes are endorsed by The Prince's Countryside Fund. If you're interested in setting up a scheme see the poster on the back page for details of how to obtain more information.

Next PC meeting: Monday 10th Feb.

**DIARY DATE: 2020 POINT TO POINT RACES
SUNDAY 8TH MARCH**

HOLLOWELL & TEETON NEWS

HOLLOWELL & TEETON PARISH COUNCIL NEWS

“Not Another One!”

‘Brenda of Bristol’ may be concerned to learn that there is to be another election but residents of Hollowell & Teeton should welcome the opportunity to respond to the misquotation of ‘Ask not what the Parish Council can do for me, but ask what I can do for the Parish’ (with apologies to JFK).

Yes, on the 7 May 2020 there will be local elections for the eight seats on Hollowell & Teeton Parish Council.

These will coincide with elections to the shadow unitary councils and also the election of the Police, Fire & Crime Commissioner.

Having a combination of elections is useful because it means the costs (e.g. polling station, presiding officers, returning officer etc.) are shared; although the cost of an election should NEVER be a disincentive!

Because of Local Government Reorganisation (LGR), parish and town councillors are currently serving a five year term of office.

The next term will also be five years and then every four years, so that parish and town council elections and unitary council elections are aligned in the future. So, now is the time for you to consider and prepare to put yourself forward as a candidate for the Parish Council.

Further details on the formal process will be issued by Daventry District Council, (noting that nominations for election close at the end of March 2020), but in the interim, please contact any of the current Councillors (via the Clerk) to gain further insight into the role of a Parish Councillor. www.hollowellandteeton.org.uk

CHANGES TO STREET DOCTOR -NEW SYSTEM TO REPORT POTHOLE ETC

Northamptonshire County Council (NCC) is responsible for the Highways and verges, and had a system called Street Doctor to allow Members of the public to Report Issues.

This has now been replaced by a new system called **Fix My Street**. The new system went live on 26 March 2019. Current reports have been moved over so they shouldn't have to be resubmitted and the old report reference numbers should still work. **Fix My Street** is simpler to use and mobile responsive and it allows photos to be attached to reports.

Any problems with the highway network should now be reported via

<https://fixmystreet.northamptonshire.gov.uk>.

Whether it's a pothole or damaged verge, any member of the public can submit a report.

HOLLOWELL HENS

The Hollowell Hens had a very jolly evening creating Christmas wreaths in the Village Hall. A big thank you to retired florist, Judy Brown who showed us how to assemble our designs. It was great fun and amazing to see such a variety of beautiful wreaths at the end.



SAVE THE DATE

Hollowell Hens are planning a Wine Tasting in the Village Hall on the evening of 28th Feb and a Bring a Board Game evening on 20th March. Contact Sarah@Mourant.uk for more details.

HOLLOWELL & TEETON NEWS

HOLLOWELL 2019 CAFE CHRISTMAS

Cafe Christmas in the Village Hall was as bustling as ever. The bacon & egg rolls and sausages were delicious and for the stout hearted, this breakfast feast could be rounded off with homemade cake and steaming coffee. A village hall social wouldn't be the same without Dawn Fountain's excellent tombola, and there were craft stalls and local artists selling cards and paintings. Jan and Crawford Craig produced a fascinating photographic display of life in Hollowell and Teeton over the last century and Sarah Mourant led the hand-chime playing. Thank you to all who came along.



MONTHLY COFFEE MORNINGS WITH THE HOPEWELL TEAM

Since November, we have been running drop-in mornings in the Village Hall on the third Friday of each month from 10am - 12 noon. Come along for a coffee and a chat and a quick break from the daily churn. All are welcome, refreshments are free and lifts can be provided to and from the Village Hall. Please call 07780

265614 if you need a ride. It has been great to see some of the youngest and the oldest residents of Hollowell & Teeton there. The next two meetings will be Friday 21st February and 20th March.



HOLLOWELL & TEETON NEWS

A REVIEW OF HOLLOWELL VILLAGE HALL IN 2019

Dear Villager,

2019 has been a year of achievement in the Hall with the completion of almost all of the interior redecorations. The kitchen was the last part of the jigsaw and it now looks very smart with white tiling and new paintwork. Our Hall is something for us all to be proud of and we hope that the 'founders' of the Hall in 1972 would also be happy to see it today.

Visitors from outside the village all comment upon the bright and cosy hall we have, just right for family and smaller events. Indeed in 2019 the number of bookings increased considerably and we have had a 'village' wedding reception, a wedding anniversary, birthdays and two 'Baby Showers'. The latest addition has been Bridge lessons!

In January 2020 we made a further improvement to the Hall, with the addition of sound absorbing panels that will dampen the echoes at both quiet and busy events.

Bookings have already started for 2020 with another wedding reception and another wedding anniversary. What could be nicer than celebrating a family event within the village? So do think about the Hall when planning your celebrations.

Thanks are due to all the villagers who have come to help with the running of the Hall, bringing new blood and enthusiasm. Special thanks go to the Steam Rally who have again been generous with financial support, allowing us to plan for the future.

The Village Hall Committee



Installation of sound absorbing panels



HOLLOWELL VILLAGE HALL



Coffee Morning

Sunday 8th February



9am to 12 Noon

VILLAGE HALL TOTE WINNERS

OCT/NOV 2019

Jane Eaton , Tony Robbins,
Hannah Oswin, Anne Wyatt ,
Marie Bramwell, Mike Taylor ,
Joan Leatherland , Crawford Craig

A JOYOUS EVENING IN HOLLOWELL

Around seventy villagers and members of the Hollowell Steam Rally team gathered at St. James's Church at 10pm on Christmas Eve for the annual Carol Service, led by Rev. Chris Peck. The church looked splendid with Christmas flowers and a decorated tree. James Bonsor, from Holcot, played the organ magnificently. Thank you to all who read the lessons.

THORNBY NEWS

MALE VOICE CHOIR



St. Helens Church Thornby once again welcomed the Northampton Male Voice Choir to an evening of wonderful singing.

Wine and refreshments were served and it was lovely to see the church full.

All proceeds raised will go towards St. Helens and the upkeep of this lovely 13th century church.

Special thanks to the PCC for all their hard work in making this concert so successful.

DEFIBRILLATOR for THORNBY Village

A big thankyou to Alex Todd for raising £385.90 towards the cost of a Defibrillator for Thornby Village.

Thank you to Simon from The Red Lion Pub for raising funds and contributing to this very worthwhile project. Thank you also to all those that donated raffle prizes, bought raffle tickets and supported the fund raising for this life saving equipment.

The Defibrillator will be fitted early in the new year and training will be available - dates to be confirmed.

It will be situated on the main A5199 opposite the Red Lion Pub on the corner of Church Lane.

THORNBY VILLAGE HALL MANAGEMENT COMMITTEE

Thornby Village Hall is available to let. This small and intimate hall is suitable for Childrens' Parties, Meetings, Talks, Demonstrations, Yoga. Sales etc. Contact: 01604 743860



Mj Burdett Plumbing

Plumbing & Heating Engineer

Central heating installation, repairs & service

Oil fired Boilers supplied & fitted

Full bathroom installation

For all your plumbing requirements

No job too small

Over 20 years experience

Call Mark on:

07841 572458

01604 740704

Dawn Mallard Hairdressing

17 Brixworth Road Spratton NN6 8HH
01604 847260

Stylists for Ladies, Gents, Students & Juniors
Visit us for friendly and professional hair care.

Our stylists have extensive experience
in precision cutting, razor cutting,
colour slices, weaves, colouring,
big hair blow dries, roller setting,
creative or traditional perming

Great hair-up do's for weddings, proms and special
occasions

We are working with Olaplex, a revolutionary upgrade
service for hair colouring

Competitive prices, with concessions
for seniors, students and juniors

Free Consultations and Loyalty Cards
Complimentary Tea and Coffee

8.30 - 6.00pm (1.00pm Saturdays)
National Hairdressing Federation Registered

MESSAGE FROM REVEREND CHRIS PECK, THE UPLANDS GROUP OF CHURCHES

CHURCH NEWS

The Turning Year

The year has just turned as I write this; we have entered a new year and a new decade. By the time you read this, the days will be beginning to lengthen and little signs of the oncoming Spring will be appearing. The changes in the seasons remind us that change is central to all life and cannot be avoided.

There will be many changes in the Uplands over the coming months. I will retire as Rector of the Uplands in March. My final service will be Sunday 8th March at 10.00 at Guilsborough; it would be lovely to share that service with as many who would like to be there. The following week Judy and I will be moving to Little Brington.

Rev'd Allison Twigg will become Acting Rector and I hope in due course will be installed as Rector of the Uplands Group. As we are not moving far away, Judy will continue to serve as Assistant Priest in the Uplands, at least until a new appointment is made. There will be changes in the way the Uplands Group is structured and changes in the pattern of worship.

What will not change is the constant love of God for each resident of the eight villages and two hamlets that make up the

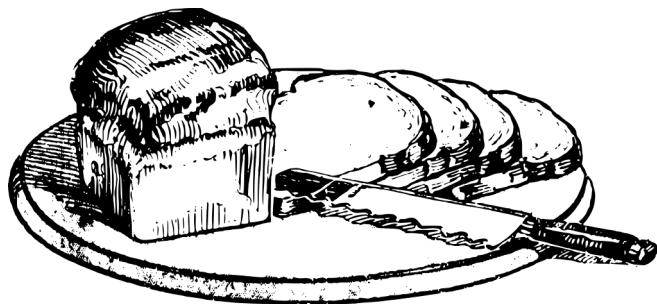
Uplands; the love that brought God to earth in the person of Jesus Christ that we celebrated at Christmas; the love that took Jesus to the Cross which we remember on Good Friday; the love that burst through the barrier of death on Easter day, having taken on itself all the evil and sin in the world, and brought into being that Kingdom of peace and goodwill that the angels proclaimed; the love that pours upon us the gracious fire of the Holy Spirit that we celebrate at Pentecost.

It is my experience of that love of God which has sustained me through all the challenges and joys of ministry in the Uplands; it is that love that I have sought to share with others and that I have longed to see expressed in our relationships with one another. It is that love that will sustain the Uplands into God's future; and it is to that love of God that I commend you as we move into our different futures.

Chris Peck



Lent Lunch 2020



Saturday 21st March

12 – 2pm

By kind permission

Col. & Mrs Evans

High Street, Guilsborough.

Offers of soup or cheese welcome.

Tickets £6

Available from Janet: 01604 740640

SHROVE TUESDAY Tuesday 25th February

MOTHERING SUNDAY

**SUNDAY
22nd MARCH**



Church Services:

COLD AHSBY	- No Service
COTTESBROOKE	- 9.45 am
CREATON	- 11.00am at URC
GUILSBOROUGH	- 9.45am
HOLLOWELL	- No Service
RAVENSTHORPE	- 11.00am
SPRATTON	- 2.30pm Afternoon Tea
THORNBY	- No Service

CHURCH ROTA

Uplands Group of Parishes office (answerphone): 01604 743444
Email: uplandsgroup@btinternet.com

FEBRUARY 2020									
Week of Month	1st	2nd	3rd	4th		1st	2nd	3rd	4th
Sunday	2nd February Candlemas	9th February 3rd Sunday before Lent	16th February 2nd Sunday before Lent	23rd February Sunday next before Lent	26th February Ash Wednesday	1st March	8th March 2nd Sunday of Lent	15th March 3rd Sunday of Lent	22nd March 4th Sunday of Lent/ Mothering Sunday
Holy Day						1st Sunday of Lent			
Colour		Green	Green	Green	Purple	Purple	Purple	Purple	Purple
Cold Ashby	9.30am BCP Communion 11.00am	10.00am	9.30am Morning Prayer	No service		9.30am BCP Communion 11.00am	10.00am	9.30am Worship for All	No service
Cottesbrooke	BCP Communion		No Service	BCP Morning Prayer		BCP Communion		No Service	Mothering Sunday Service
Creation	9.30am CW Communion		9.30am BCP Communion	9.30am Worship for All		9.30am CW Communion		9.30am BCP Communion	11.00am Service at URC
Gulfsborough	11.00am BCP Communion		8.30 am	9.45am	10.00am	11.00am BCP Communion		8.30 am	9.45am Mothering Sunday Service
			BCP Communion <i>Brunch @ 11 *</i> 5.00pm Evensong	CW Communion	Communion with imposition of ashes	Communion		BCP Communion <i>Brunch @ 11 *</i> 5.00pm Evensong	
Hollowell	<i>Invited to join Gulls</i>	Common Worship with Communion at Cold Ashby	11.00am BCP Morning Prayer	11.00am CW Communion		<i>Invited to join Gulls</i>	Common Worship with Communion at Gulfsborough	11.00am BCP Morning Prayer	11.00am CW Communion
Ravensthorpe	8.30am BCP Communion		9.45am CW Communion	11.00am Worship for All		8.30am		9.45am CW Communion	11.00am Mothering Sunday Service
Spratton	11.00am Worship for All		11.00am CW Communion	8.30am BCP Communion 5.00pm		11.00am Worship for All		11.00am CW Communion	8.30am BCP Communion 2.30pm
				Table Talk					Mothering Sunday Afternoon Tea
Thornby	No Service		No Service	8.30am BCP Communion		No Service		No Service	8.30am BCP Communion

BCP = Book of Common Prayer CW = Common Worship
Morning Prayer is held at 9am: Gulfsborough on Monday & Wednesday and Spratton on Tuesday & Thursday mornings
* Gulfsborough Village Hall

RAVENSTHORPE SPEAKER'S CORNER

MARY BORDEN FAMOUS & INFAMOUS

Heroine, Celebrity and Author AND Local Resident

February 13th This talk, about a Chicago-born heroine of WWI, sees the welcome return of speaker Gary Shaeffer. His subject, wealthy heiress and socialite, Mary Borden 1886-1968, described as one of the conflict's 'forgotten heroines' was a nurse and activist. She was a prolific writer throughout her life, and a poet recently celebrated for her war sonnets. During the 1920's, she resided in Great Brington.

LIFEBOATS OF RNLI; RESCUE OF WWI HOSPITAL SHIP, SS ROHILLA

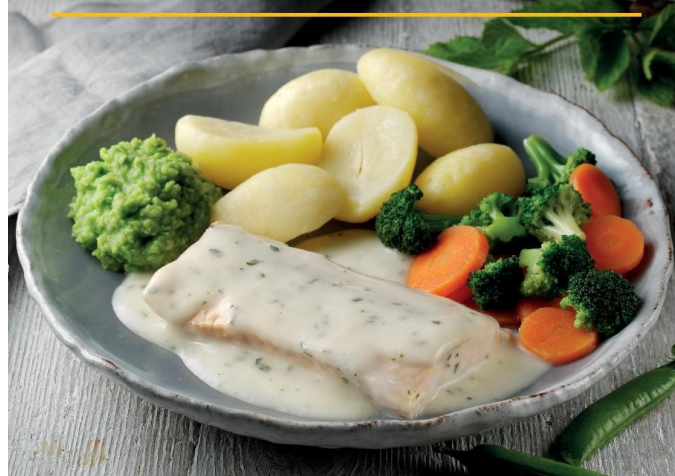
April 2nd Mike Major is a life-long volunteer with RNLI and now Chairman of the Lifeboat Management Group of Whitby lifeboat station. He will reach back over 100 years to tell the desperate story of the 3-day attempt to rescue passengers of WWI hospital ship, SS Rohilla, off Whitby's jagged rocks. Reports described the disaster as 'worse than the Titanic'.

Speakers Corner hosts bi-monthly illustrated talks at Ravensthorpe Village Hall NN6 8EH. 7 for 7.30pm £5.50 We aim to present high quality, entertaining speakers on a diverse range of subjects.

For more Info/Book/Pay at www.rvhall.online Call: 01604 770482. Licensed Bar. Level access.

Speakers Corner is presented by Ravensthorpe Village Hall Charity No: 278283

ENJOY WHAT REALLY MATTERS



With our delicious frozen meals and desserts, prepared by award-winning chefs and delivered free by your local team, you've more time to enjoy doing the things you love. For your free brochure visit www.wiltshirefarmfoods.com or call 01536 420505 and quote ref WFF1

OVER 300 DELICIOUS DISHES

FREE FRIENDLY DELIVERY

TRUSTED LOCAL SERVICE

WILTSHIRE

EST. FARM 1991

FOODS

Keeping your home running smoothly

We are Watson Fuels - suppliers of heating oil and fuel to homes, farms and businesses across the country since 1957.

Northampton 01604 880191

www.watsonfuels.co.uk



WATSON



CHRISTMAS PICTURE WINNERS (above) receive their prizes at Guilsborough Primary School assembly, and Sofie, Hugo and Wilfy Newborough (right) receive the family prize.



VICTORY IN EUROPE (VE) DAY CELEBRATIONS MAY 8TH



A date for your diaries - an event all villages are invited to attend, not just for Guilsborough.

On **Friday 8th May** 1-5pm there will be a celebration at the Guilsborough Playing Field to include themed entertainment, stalls, a street party tea, vintage cars and more. At 3pm it is hoped to join the nation with pipers playing and a toast to the heroes of WW2.

At 7pm there is a national Cry for Peace and bells will ring out throughout the country. Evening entertainment in the Village Hall – a themed dinner and dance.

On **Sunday 10th May** there will be a service of celebration and commemoration and a playing of The Last Post.



Good Neighbours Schemes are established and run by local people to provide day-to-day support for other residents who may need help on an occasional or regular basis.

The aim is to support neighbours to maintain a good quality of life, remain independent in their own homes

if they wish to, and reduce their reliance on statutory health and care support systems.

Daventry District Council is working with Northants ACRE to develop schemes across Daventry District.

How the scheme works:

In order for a Good Neighbours scheme to work in a village, parish area or neighbourhood, we need at least one person from that area to volunteer as a co-ordinator. Their job is to match people who need help, with volunteers in the area who are willing to give that help.



THE PRINCE'S
COUNTRYSIDE
FUND

The overall aim is to help vulnerable or older people with everyday tasks such as:

- Dog walking and caring for pets during holiday or illness
- Household tasks such as setting up televisions, changing light bulbs or batteries in smoke alarms
- Help with shopping
- Support filling in forms, writing letters, reading or using computers and the internet
- Gardening
- Befriending
- Offering lifts to a GP surgery, clinic, hospital, day centre or other appointments.

Current schemes funded by Daventry District Council and now operating in our district are Moulton, Crick, Welton and Byfield. They have collectively helped 160 residents, provided 88 volunteers, and have set up referral links with local GP Surgeries. Recently endorsed by The Prince's Countryside Fund, the scheme was also featured in the Village Survival Guide, a new book published to help rural communities thrive.

For more information on setting up a scheme or to arrange a visit, call Daventry District Council on 01327 871100

ALPHABETICAL ADVERTISERS

- J.M. Billings Plumbing & Heating Engineer - page 4
- Brixworth Osteopathic Clinic - page 2
- Dawn Mallard Hairdressing - page 16
- Hayley Clarke Acupuncture - page 2
- LocBox storage solutions - page 7
- Mark Burdett Plumber - page 16
- Merrick School of Driving and Towing - page 5
- Watsons Petroleum - page 19
- Wills Direct - page 7
- Wiltshire Farm Foods - page 19
- Witch & Sow Guilsborough - page 2