



Are there bees in your trees?



As a hobbyist beekeeper Patsy Hollingum has become intrigued with what appeared to be an unusual occurrence: long-established feral colonies of honeybees living in cavities in trees. In fact this is far more common now than was the case at the start of this century.

Patsy is member of a group of Northamptonshire beekeepers who are mapping wild or feral colonies of honeybees across this area of the county. She would be interested to hear from *Village Link* readers who know of colonies of honeybees that are living in disused chimneys, old buildings, church towers, trees, and the like. If you are aware of a nest in such an area, please keep an eye open as Spring approaches and, of course, let Patsy know.

Honeybees will venture from their nests on dry days when the temperature is 10° C or above, so they may be out and about much earlier than you think.

Typically, the nest entrance will be around 3 to 4 metres above ground, and the entrance will be small. If the weather is warm enough, and there is forage available, the entrance will be busy.

If you think that you know there are feral honeybees, or are unsure of whether they are honeybees (*apis mellifera*) or bees of another species, please contact Patsy by email at beesintreesnn@gmail.com.

Please be careful not to trespass on others' property or disturb nesting insects.

Is it a honey bee?

As well as honeybees there are around 24 species of bumblebee and over 240 species of solitary bee in the UK. If you are unsure as to what species it is, visit www.bbka.org.uk/what-bee-is-this.

Honeybees

There can be variation in the colour of the main body or abdomen of honeybees, from honey coloured Italian bees to very dark native Black honeybees but all will form a distinctive cluster when they have settled as a swarm. Honeybees have large hairy eyes, a furry chest or thorax and distinctive bent antennae.

A Letter From

Where are these local post boxes ?



Clue: one post box per village—answers on the Hollowell and Teeton pages.

Inside this issue:

Cold Ashby	P3
Cottesbrooke	P4
Creton	P5 - 9
Guilsborough	P10 - 13
Hollowell	P14 - 16
Thornby	P17
Church	P18

Creaton Village Shop



OPENING HOURS
 Mon-Fri: 7.30am - 12.30pm
 1.30pm - 6.00pm
 Sat/Sun: 8.00am - 12 noon



We stock a wide range of fresh & frozen produce, as well as all your kitchen and household essentials, drinks, magazines, newspapers and cards. We also sell fresh flowers, compost, instant BBQs, coal, logs and kindling, and have a dry cleaning service!

Our Post Office counter services are available whenever the shop is open. And there's free parking available right outside the shop.



We now offer FREE Home Delivery to the surrounding villages, or if you prefer you can call to pre-order your groceries and collect them yourself. **PRE ORDER**
 Call us on 07789 828423 to place an order.



Creaton Village Shop is a community enterprise, run largely by local volunteers as a valuable community asset.
 We source products from around 30 local suppliers!



2a Welford Road, Creaton, NN6 8NH
www.creatonvillageshop.co.uk





Can an Osteopath help you?

Osteopaths don't just treat back pain – we can help with pain related to pregnancy, pelvic pain, sports injuries, neck pain, recurrent headaches, joint pain, sciatica and other nerve problems. Patients have also found osteopathy helpful for digestive issues, circulatory problems, neuralgia, sleeping problems amongst many others.

Call now to discuss your symptoms with one of our experienced Osteopaths



BRIXWORTH
 OSTEOPATHIC CLINIC
PART OF THE APOLLO HEALTH GROUP

No need to wait. You can be seen within 24 hours. Call now or visit www.brixworthosteopathy.com
 Quote V1.2016 to receive 10% off your initial consultation

01604 889241 | info@brixworthosteopathy.com
 Brixworth Osteopathic Clinic, Catherine House, Harborough Road, Brixworth, Northants. NN6 9BX

COMPASS ENERGY

Delivering fuel to homes in your area.

Trevor Reay

From 1983 Trevor has worked alongside Tony Watson developing an oil distributor in the area.

After a change of ownership Trevor left the company in May 2018.

Trevor has now teamed up with Compass Energy to once again provide a reliable personal service.

Our chairman, Tony Watson has clearly defined our values.

SERVICE – TEAMWORK- SAFETY

Why Choose Compass Energy?

- ✓ No Brokers – price savings go direct to you.
- ✓ Competitive pricing.
- ✓ Reliable personal service you can trust.
- ✓ Our own fleet of Tankers permitting a rapid response for urgent deliveries.
- ✓ Years of industry knowledge and experience.

Call Trevor to obtain a quote or place an order.
01604 345526 | 07702867349

Visit our website for more information
compassenergy.co.uk



VILLAGE LINK

is a bi-monthly publication delivered free of charge to households in Cold Ashby, Cottesbrooke, Creton, Guilsborough, Hollowell, Teeton and Thornby. It is produced and distributed by volunteers. Due to restrictions of time and space there is no guarantee that copy submitted will be used. All funds received from advertising go towards printing costs.

Editorial team:

Andrea King 01604 740670
Angela Hubbard 01604 740379
Tony Hart 01604 740535
Sarah Dalzell 07917 608238
Katie Fulcher 07747 604067
Eve Wooldridge 07711 335771
Richard Hollingum 07887 652599
Mark Revitt Smith 01604 740240

Wherever possible **please email** your contributions to.
editorial@villagelink.org.uk. This saves considerable time re-typing information! When providing hard copy materials, please post to Angela Hubbard, The Old Sun, High Street, Guilsborough.

Advertisements are welcome from local businesses, charities, clubs and societies. Commercial businesses pay advertising rates. One insertion: full page £140, half page £70, quarter page £35, eighth page £20. Two or more insertions: full page £120, half page £60, quarter page £30, eighth page £15. All prices are per insertion. Colour available in some issues, price on application. Private ads are also welcome. Back page 'lineage' cost £1.50 per line. Please contact Angela Hubbard on 01604 740379 to book advertising or email advertising@villagelink.org.uk. Cheques payable to 'Village Link'

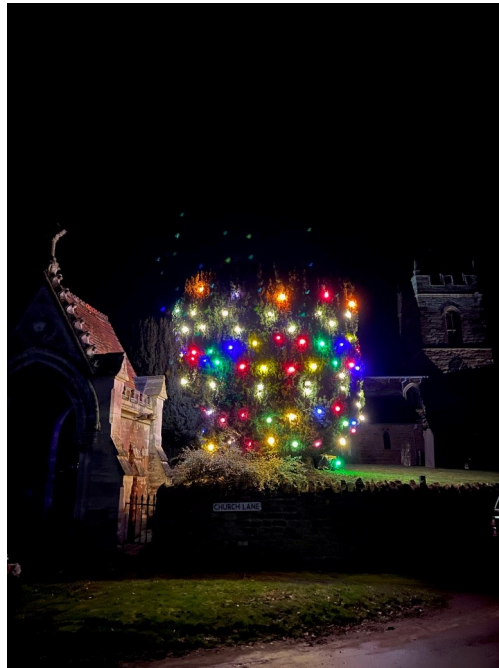
DEADLINE FOR NEXT ISSUE:
Monday 1st March 2021

Disclaimer: the publishers cannot be held responsible for any errors or omissions. They cannot be held accountable for the accuracy of advertisements appearing in this newsletter, nor for editorial information sent to them or published by them.



COLD ASHBY'S TREE OF REMEMBRANCE

A resident of our village lay awake at 3 am, wondering how we could raise some income for St.Denys Church in Covid 19 times ...



After a while, she came up with the idea of a 'Tree of Remembrance' in the churchyard, whereby people wishing to remember a departed loved one could purchase a light bulb, which would represent their life.

Realising that she would need help, she got in touch with the treasurer of the P.C.C. who thought it was a 'wonderful' idea.

We then sprang into action, printing letters to every household in the village, plus extras to be sent to former Cold Ashby residents around the U.K.

The response was overwhelming and the 'Tree of Remembrance' was born.

On December 12th, one of the large yew trees in the churchyard was chosen to be decorated, with each light bulb representing a life recalled and remembered at this festive time.

William, Mick, Peter, Ruth and Katie spent the Saturday morning erecting the bulbs in the Christmas fashion.

Also, the names of the recipients and a short message of sympathy, or celebration, were added to an 8ft high replica tree which William and Ruth had placed in the church porch, again suitably illuminated.

Thankfully, by 5pm the rain had ceased and friends and residents started to make their way towards the church for the 'switching-on' at 6pm, amid the usual 'oohs and aahs'.

We were delighted to see well over 100 people attending, with everyone observing social-distancing and wearing face-masks.

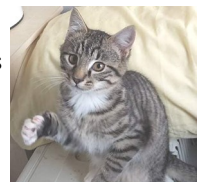
We are pleased to be able to report that there were 160 bulbs on the tree lit up until 6th January, and a total of £970 was raised. Many thanks to everyone for their help and support. It is very much appreciated.

M.Lill



MAGGIE'S LITTLE MIRACLES - AN UPDATE

Following on from the story in the last issue of Village Link, Fiona reports that Maggie and her two daughters all have new homes, just the two boys left. If you know of anyone looking for two playful male kittens, happy to be handled, please get in touch with her on 07488 373629.



COTTESBROOKE NEWS

It is a good time to catch nature on the wing before it can hide again in the green boughs that surround us here. The other day a pair of kestrels were chasing each other along hedgerow tops and across fields before coming to rest in adjacent trees. A temporary break. The low bright sun lit up the reds and browns of their feathers as they stayed a short while to preen before carrying on with the chase.

The Windhover

I caught this morning morning's minion, king-
dom of daylight's dauphin, dapple-dawn-drawn Falcon, in his riding
Of the rolling level underneath him steady air, and striding
High there, how he rung upon the rein of a wimpling wing
In his ecstasy! then off, off forth on swing,
As a skate's heel sweeps smooth on a bow-bend: the hurl and gliding
Rebuffed the big wind. My heart in hiding
Stirred for a bird,—the achieve of; the mastery of the thing!

Brute beauty and valour and act, oh, air, pride, plume, here
Buckle! AND the fire that breaks from thee then, a billion
Times told lovelier, more dangerous, O my chevalier!

No wonder of it: shéer plód makes plough down sillion
Shine, and blue-bleak embers, ah my dear,
Fall, gall themselves, and gash gold-vermilion.

Gerard Manley Hopkins (1844 - 1889)



WillsDirect

Will Drafting Service

1 Judges Court, Creton, Northampton NN6 8NS

Office: 01604 505170

Mobile: 07899 938255

Email: willsdirectbusiness@gmail.com

www.willsdirectnorthampton.co.uk

**There is one important job you've
been meaning to do for years...
Make a Will!**

Wills Direct Northampton has been established since 1993 offering a professional, expert Will Writing Service to people throughout Northamptonshire and the surrounding area. With Wills written for over 12,000 people, Wills Direct can help you to write your Will simply and quickly with our affordable **FREE HOME VISIT SERVICE.**



**Safe to do
business with
Code Compliant**



J.M. BILLINGS

PLUMBING & HEATING ENGINEER

OVER 30 YEARS OF EXPERIENCE

OIL AND GAS SERVICE, INSTALLATION AND MAINTENANCE
BATHROOM AND UNVENTED HOT WATER INSTALLATIONS

FOR FURTHER INFORMATION OR TO ARRANGE
A NO OBLIGATION QUOTATION PLEASE CONTACT JIM ON:



M 07810 800876

E JIMBILLINGS@ROCKETMAIL.COM

BASED IN CRETON



Pancreatic Cancer UK

Well done to **Millie Inwood**, who has raised over £800 for much needed research. Millie ran 5 kilometres every day in November to support Pancreatic Cancer Awareness month in

memory of her special grandfather David Watt. David, who had been a Parish Councillor and a member of the United Reformed Church, died of the disease in 2017.

Millie fitted in her daily run with her third year degree studies at home in Creaton.

“ Pancreatic cancer is considered to be a common cancer and around 10,000 people a year are diagnosed with the disease. Sadly, around 9,000 people will also die every year meaning it has the lowest survival of all common cancers.

There are many reasons for this. Symptoms are often vague and not recognised and people are experiencing unnecessary delays to get diagnosed, and waiting too long to be referred for treatment. Alongside this, effective new treatments are not being developed. As a result, 9 out of 10 people with pancreatic cancer don't get the treatment they need to give them the best chance to survive.

www.pancreaticcancer.org.uk

”

CREATON WI

President, Daphne Clark, delivered Christmas cheer to every member in the form of a gift bag containing Prosecco and beautiful items hand made by each member of the committee – a padded coat hanger, a lace bookmark, medlar cheese, redcurrant jelly and a knitted Christmas pudding hiding

theWI
INSPIRING WOMEN

a chocolate!

This was followed by our very first Zoom meeting, which was great fun with everyone opening their Prosecco to share a Christmas toast.

We plan on holding more meetings by Zoom in 2021. The next one is on 13th January at 7.30 pm and features a talk entitled



“From Ration to Fashion” by Patricia Heed.

If you would like to join us you will be most welcome, please contact Daphne on 505546.

WALKING GROUP

Thank goodness we are still allowed to walk as a group of 6, at least at the time of writing! (Ed: That was then!!!) Creaton Walking Group had a lovely December walk exploring part of the Via Beata long distance walk from Brixworth along the disused railway line to the Five Ways junction above Chapel Brampton. The group were delighted to receive a friendly wave from Father Christmas who was visiting Brampton Halt and then to see the Santa Special train coming up the line.



The New Year's Day local walk got 2021 off to a good start quickly followed by the January walk.

Why not make joining the walking group your new year's resolution? The group meet at Creaton lychgate at 10am on the second Saturday of the month and walk for about 8 miles followed by an optional pub lunch when allowed.

Next walks are:

- Saturday 13 February (Covid rules permitting)
- Saturday 13 March (Covid rules permitting)

CREATON SINGERS

Finally the Creaton Singers managed to sing together and all for a good cause! The Singers went round Creaton singing carols, bringing festive cheer and were delighted by the warm welcome they received everywhere, not to mention the delicious cakes and warm drinks!

Best of all, thanks to Creaton's generosity, the Creaton Singers raised £120 for the Hope Centre. Quite an achievement, given the constraints of social distancing!

The Creaton Singers hope to be able to get together again soon and in the meantime wish everyone a very happy new year.

CREATON PARISH COUNCIL

Creaton Parish Council Contact Details:

Parish Clerk: You can contact our Parish Clerk for Creaton Parish Council, Katrina Jones on creatonpc@gmail.com or by telephone on 01604 740862.

Agendas and minutes of meetings are available on the village website www.creaton.org.uk



Meetings are held bi-monthly at 7.30pm on zoom. The first 15 minutes is reserved for the public forum.

Parish Council Meeting dates 2021

Meetings will continue to be held on the second Tuesday of each month at 7.30pm. The dates for 2021 are:

9th March 2021
11th May 2021
13th July 2021
14th September 2021
9th November 2021

The Parish Council will continue to hold meetings on Zoom until further notice. If you would like to join one of our meetings you will find the zoom meeting details on the agenda. You can join by telephone if you do not have access to a computer.

Planning Applications

Please look on the Daventry District Council website for full details of all Planning Applications.

New Councillor

We would like to welcome Ian Horne, our newest parish councillor, to the parish council. Ian has lived in the village for many years and will make a valuable addition to the parish council.

Overhanging Hedges

We would like to remind residents to please check any hedges or trees you own and cut back any overgrowth impinging on to the footpaths to help pedestrians walk safely. Thank you.

Dogs on the Playing Field and Dog Fouling

We would like to remind residents to please keep your dogs on leads when walking across the playing field. Dogs are not permitted to be exercised on the playing fields.

Dog fouling also continues to be a problem around the village.

Daventry District has a Public Spaces Protection Order (PSPO) in place in order to ensure that dogs that are kept

under proper control in public places, as well as to tackle dog fouling.

The PSPO states that anyone who is control of a dog in a public place must:

- Pick up after that dog
- Carry the means to pick up after that dog
- Prevent the dog from entering a fenced-off children's play area
- Put the dog on a lead when requested by an authorised officer
- Keep the dog on a lead in graveyards, cemeteries and memorial gardens, and near schools when they are open.

The PSPO also states that a maximum of 6 dogs can be walked by one person at one time, and that no smoking is permitted in defined and fenced off children's play areas.

Anyone who breaches any of the regulations listed above faces a **£100** fixed penalty notice or potentially court action, which could result in a fine on conviction of up to **£1,000**.

Tree works

The parish council has recently had an inspection carried out of all the trees which the parish council is responsible for in the village and instructed a contractor to carry out the works identified in the coming months to the trees on the Green and the Churchyard.



Dawn Mallard Hairdressing

17 Brixworth Road Spratton NN6 8HH
01604 847260

Stylists for Ladies, Gents, Students & Juniors
Visit us for friendly and professional hair care.

Our stylists have extensive experience
in precision cutting, razor cutting,
colour slices, weaves, colouring,
big hair blow dries, roller setting,
creative or traditional perming

Great hair-up do's for weddings, proms and special occasions

We are working with Olaplex, a revolutionary upgrade service for hair colouring

Competitive prices, with concessions
for seniors, students and juniors

Free Consultations and Loyalty Cards
Complimentary Tea and Coffee

8.30 - 6.00pm (1.00pm Saturdays)
National Hairdressing Federation Registered



CREATON URC

Focus on Hope.

For our Gift Service in December 2020, Creaton United Reformed Church, instead of collecting warm winter clothes for the homeless, or cosmetics, toys and treats for the women's refuge, we were pleased to hear of the family hampers being put together by the Hope Centre for families in need this Christmas. Not a luxury Fortnum & Mason Hamper with exotic pickles and thimbles-full of jam but a Family Christmas Hamper. This year more than ever, we have seen families suffering with furlough, isolation and worries about providing a Happy Christmas for all. So, when Sylvia Watt heard about the Hope Hampers she shared the vision and it caught the imagination of



friends not just from other churches but the entire community and also people from other villages. We have been delighted by the generosity of so many folk and offer a big thank you to all. There was so much food, so many treats and items of warm clothing, that a van came from Hope Northampton to collect it all. We captured a couple of photos, one of the collection point in Creaton URC Coffee Shop and one of the gifts loaded into the van ready to be transported to the Hope Centre. Thank you one and all for your kind generosity.

Rev. Elizabeth Kemp

FIND OUT WHAT YOUR HOME IN NORTHAMPTON IS WORTH



Use Our FREE Instant Online Valuation Tool

If you're thinking of moving, start by getting a Hometrack Valuation Report to see how much your home is worth.

Paul Chant
Branch Director



Hometrack is the UK's largest automated valuer of residential properties and is relied upon by 13 of the 15 top UK high street lenders.

This report normally costs £19.95 and includes ALL recent house sales near you!

Get your **FREE** online valuation report now at:
www.EweMove.com/NorthamptonNorth
or call: (24/7) 01604 267 772

EweMove respects any existing sole agency agreement already in place with another agent.



Sunday Services

In line with the current COVID 19 Government restrictions Creaton URC plan to hold Sunday Services at 11am on the 2nd and 4th Sundays in the month as follows;

Sunday Worship February 2021:

11am 14th

11am 28th

Sunday Worship March 2021:

11am 14th

11am 28th

The above services may be subject to change in the event of any changes in the current Government restrictions

CREATON NEWS



CARRIE BILLINGS
NUTRITION & KINESIOLOGY

A NATURAL AND HOLISTIC APPROACH TO HEALTH AND WELLBEING

DIGESTIVE DISCOMFORT – IBS, ACID REFLUX, BLOATING?

FOOD SENSITIVITIES?

TIRED ALL OF THE TIME?

SKIN PROBLEMS?

STRESSED?

These are just some of the health issues that I can offer support with.

Whether you would like help regarding a specific health issue or whether you want to understand the best nutrition and supplement choice for you then I'm here to advise you.

Based in Creaton

On-Line consultations available

For further information contact Carrie on:

07974 394877 carrie@carriebillings.co.uk www.carriebillings.co.uk



The light this time of year can change so quickly. You leave your front door and there is a thick mist and a crunchy frost. It is like walking in a blanket of benign droplets. The view across the valley is one of white clouds, the sun above a sea of cold steam. Creaton Cover stands proud, an island floating on a sea of white.

The mist begins to part, the sun, a fierce ball with surprising warmth, pierces the curtain which rapidly folds itself away revealing a clear blue sky.

The shadows are long despite it being a couple of hours off the midday. It will soon be the equinox.

Everything is clear.

- LOCAL OFFER -
£200 OFF HOME CHARGER INSTALLATION WITH PURCHASE

"Specialists in electric vehicles"



- Electric Vehicle Sales
- Sourcing Electric Vehicles
- Providing 5+ Years of EV Knowledge
- Complete Set-Up, inc. Home Charging Point

Interested in the benefits of owning an electric vehicle?

Contact Magnus below:

info@erlsvehicles.co.uk | 07943 384711 | www.erlsvehicles.co.uk



CREATON NEWS

OVER THE COUNTER

If the run-up to Christmas was not busy enough just because of the time of year, someone clearly thought that even more could be being done at Creaton Community Shop. December 2020 was the busiest at both at the Post Office counter and in the Shop. As well as the standard order service, there were 35 large Christmas pre-orders for cheeses, meats and wines. The shop also provided bespoke hampers to a large corporation featuring CVS-branded and local products, as well as offering a much wider range of seasonal products.

Creaton Village Shop continues to offer free delivery for orders within 5 miles, and it's usually next day!

You can order directly from the website (<https://www.creatonvillageshop.co.uk/order>) or just call on 07789 828423

Having survived the first round of lockdown, our local communities saw the next one coming as the tiers began to flow, but the shop met that head on and in the depths of a second lockdown, it continues to thrive undeterred. Indeed one of the things about a good shop is its resilience, its ability to rise to a challenge and Creaton's shop has clearly done that. In fact it could be said that it has built on that challenge as you will no doubt have seen an extension to the building.

Having met the trials of last year by increasing the turnover of stock to match demand, it soon became clear that more space was needed so that the thrice-weekly or more visits to the suppliers by the volunteers could perhaps be reduced. It was also clear that there needed to be an expansion of choice in some products—and some were also harbouring secret desires for fresh bread.



All this has now come together with the addition of a storage unit to the right of the shop. Perhaps it should really be referred to as a 'storage unit plus' because it not only has shelving for dry goods, extra freezers and chillers but also a bread oven. Now, the sweet aroma of fresh croissant and French sticks can be had, wafting its way around the shop as you buy your paper, milk and... well, virtually anything else. Other delights available freshly baked every morning include baguettes, petit pain, plain and almond croissants and pain au chocolat. The shop is able to bake a wide range of other products, so if there's anything you would like, do ask over the counter!

Other new delights keep appearing on the shelves, tempting us all in the dark January days. It has been suggested that this is the wrong time of the year to give up meat, alcohol, cakes, in fact probably most things, so the shop is contributing to this period by offering flavoured scotch eggs (Pork & Chorizo, Pork & Black Pudding, Vegetarian), premium crab meat, fresh soups from Yorkshire Provender (Roast Chicken and Pea & Spinach flavours) and Cartmel sticky ginger and sticky toffee puddings. That should help you make up your mind!

And just to show that a balanced diet is what the shop is really promoting, there is a massively extended range of fruit and vegetables, most of which can be seen on the new outdoor display unit. This makes it much easier to see and choose from what's available. Creaton Village shop & Post Office is Community Shop, owned and run by members of the local area. They are always looking at ways to improve the service, so if you have any feedback or suggestions, then please do get in touch.

Covid reminder

Please wear a mask when you are in the shop and we can only allow 2 customers in the shop at any one time.

GUILSBOROUGH NEWS



PRIMARY SCHOOL

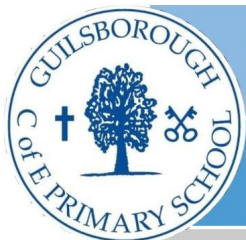
Although last term and the festive period in particular was very different to previous years, we still continued to make sure that there was lots of festive fun in our school bubbles.

Our new Drama club was a roaring success! All of the children recorded their end of term performances which were watched by their bubble and thoroughly enjoyed by all. The children embraced a festive non-uniform day, and our winning house team 'FIRE' had a special treat morning or afternoon within their bubbles. Our Reception and Year 1 children also performed and recorded a wonderful Nativity which made our hearts sing.

All of our children also had a surprise video call from Santa!

As we get the Spring term underway we find ourselves in another national lockdown. Nevertheless, we continue to strive to support our children and families in any way we can. Our school doors are still open to support vulnerable children and children of key workers every day, the same as we were during the first lockdown, and our live lessons and learning platforms are full of exciting work for all of our pupils to complete and submit back to their teachers. Although we have had to change many plans for this academic term, including changes to whole school assemblies, trips and school tournaments etc., we still have many exciting learning opportunities ahead.

Please remember to follow us on our website www.guilsboroughprimary.co.uk, or you can keep up to speed via our Facebook account – Guilsborough C of E Primary School (a closed group for parents, guardians or carers) – or through our Twitter profile - @guilsboroughpri.



Virtual Tour

Reception Places Sept 2021

If you are looking for a school place for your child in September 2021, we would very much like to welcome you!

To find out more about our school please see our
'Welcome to Guilsborough Reception' Virtual tour on our website NOW!

The video will give you the opportunity to meet our Headteacher Mrs Shilliam, and other members of our team, have a virtual tour, look at the Reception area and find out lots of information about our wonderful school.

We hope that this experience will show you and your child the exciting, enriching, caring and nurturing environment we strive to create for all children at Guilsborough C of E Primary School.

Please call **01604 740307** for more information or enquiries.
Please look at our school website or twitter page to find out more about us!



www.guilsboroughprimary.co.uk

@guilsboroughpri



PRE-SCHOOL TO REOPEN AS "SCHOOL HOUSE DAY CARE"



School House Day Care Pre-School in Guilsborough will offer flexible times and out of term hours. Please email shdcguilsborough@gmail.com for places and further information.

Learn to drive
with

MERRICK
School of Motoring
est. 1980



Merrick Bowles, DSA ADI

01604 740138

Towing instruction also available.

GUILSBOROUGH NEWS



GUILSBOROUGH TENNIS CLUB at Guilsborough Academy

At the time of writing, we are in lockdown and unable to play tennis; hopefully this will all change on 15th February and Covid restrictions will be eased.

We have Club Mornings on a Sunday from 10am—12noon, so hopefully our first one will be on

Sunday 21st February.

We play on Guilsborough Academy courts in daylight, out of school hours. This means that we should be able to play during half-term in daylight (subject to Covid restrictions).

Our Summer Membership starts on 1st April, and new members are very welcome. We have Individual, Student and Family memberships available.

We will have a coaching programme during this summer for Juniors, Students and Adults; building on the very successful sessions we had in 2020 with our coach Bobby Brooke.

If you're interested in joining, please contact Sarah on 07917 608238 or email at SarahDalzell57@gmail.com



COVID QUILT



Would you like to join in and make a community wall hanging to tell Guisborough's Covid times?

What you will need:

Set of basic instructions.

8 inch/20cm square of fabric.

Just use your imagination to decorate.

You can applique, embroider, fabric paint or stick with fabric glue. The choice is yours.

We can provide the fabric square and if needed some scraps of fabric for decoration.

All the squares will need to be finished by 1st March. This will then give us time to sew together and back to make the wall hanging by Easter.

Interested?

Please contact:

Sue Needham - 07771926519

Email: theneedhamfamily2@gmail.com

No room in the garage or the attic?



SELF STORAGE

**Rent storage space by the week or
for as long as you need**

Archive Documents

House Contents

Business or Domestic

Tel 01604505050

email: George@Loc-Box.co.uk

Loc-Box Self Storage Creaton Northants

www.Loc-Box.co.uk

NEED TO ORDER OIL?

Don't forget the Compass Energy Scheme that benefits Guilsborough charities.

Compass Energy will donate money (£50 for every 10,000 litres) to our village charities.

You are not tied into Compass Energy to buy your fuel. All you have to do is ring up and ask for a price, if the price is right then you can buy your oil from them. Remember to ask them to register your account under the GOBS group, so that the village benefits.



Call Trevor 01604 345526 07702867349 for more information or to order; www.compassenergy.co.uk

GUILSBOROUGH NEWS

PARISH COUNCIL NEWS

We would like to compile a welcome pack, full of useful local information, to be available for people new to our parish. In particular, we would like to include as many of the clubs, groups and societies that meet under more normal times. It's very easy to be included, email our Clerk at guilborough.pc@gmail.com with contact details along with the nature of the group, when you meet, where you meet and any subscription fees involved.

Alternatively, you can jot them down and deliver to 1 Pells Close. Which ever way you choose, it's important to include permission for your details to be publicised.

The Council have set their budget for the year 2021/22 which has generated our Precept which will be £30,808, a rise in line with inflation of 0.6%.

Once again, we are facing the real possibility of losing our No 60 and No 59 bus services. We, along with the other Parishes served by these buses, are being asked to subsidise the cost of these services for a third year running. We have offered to contribute the same amount as last year but some Parishes feel the formula that was used to calculate the contributions was unfair and so we have to wait and see whether the needed total

can be achieved.

With the help of a traffic flow specialist, we intend to carry out a speed analysis of traffic in Nortoft and West Haddon Road with the intention to develop a safer environment along with better traffic flows.

The decennial census is almost upon us. Households in Guilborough will soon be asked to take part in the nationwide survey of housing and the population. It has been carried out every decade since 1801, with the exception of 1941.

Information from the digital-first census will help decide how services are planned and funded in your local area. Households will receive a letter with a unique access code in the post, allowing them to complete their questionnaire online. Paper questionnaires will be available on request. Census day is March 21st. For more information, visit census.gov.uk.

census
2021

PLAYING FIELD REPORT

In these extraordinary times, the GPFA have decided to postpone their Annual General Meeting; the current General Committee and Trustees have been invited to retain their current roles until such times as the "All-clear" is given. Simon Smith has agreed to continue as the GPFA Chairman, as have all of the General Committee, Corresponding Members, and Trustees. However, some have asked to retire, and therefore the GPFA would welcome new members to it's committee, possibly in an observational role initially, to understand how the GPFA sustains an active outdoor facility for adults, teenagers and youngsters for competitive sports or for personal exercise. You will see from the football and cricket reports below, that the Field and facilities are/planned to be extensively used, both for cricket and football. The GPFA are to apply for grants to improve the football pitch surfaces so that they are less prone to waterlogging that has been seen at times in the last 2 years when persistent heavy rain occurs. The GPFA has had to "Cut its cloth" in 2020 as it was unable to fundraise from its normal events, by only completing essential maintenance and safety work. However, it will need to fundraise in 2021, and any help on existing fundraising events or suggestions for new routes to fundraise are welcome.

FOOTBALL NEWS The football at Guilborough has continued since the last update and there are three teams that currently play on Sunday morning and afternoons. The season is being massively disrupted by Covid and the rain in December also caused some games to be cancelled. Even so there have actually been 20 matches or training sessions at Guilborough since September as the Northampton league have managed to organise matches whenever possible. West Haddon JFC play all their home U12 matches at Guilborough to accommodate all the pitches that are needed for the different age groups. We are now into our



GPFA

village sport & recreation

2nd season of our arrangement with West Haddon JFC and this is working well. The U12 teams are also performing well in the leagues and their current league positions are as follows:

West Haddon U12 Ninjas are 5th in the A league

West Haddon U12 Thundercats are joint 2rd in the D league

The U18 Eagles is a new team set up by the year 13 boys at Guilborough school and they have also started the season well.

The highlight of the season so far for entertainment was the local derby against the other West Haddon U18 team which attracted a good crowd at Guilborough and ended up as a 2-2 draw.

West Haddon U18 Eagles are 5th in the U18 league.

West Haddon JFC have football at most age groups and any prospective new players can find out more details at whjfc.co.uk



CRICKET NEWS

Summer and the opportunity to enjoy team sports both seem a very long way off at the moment, but Haddon CC formed from Guilborough, West Haddon and East Haddon CCs in 2020 are preparing for a huge summer of cricket across the three villages. Covid restrictions allowing, the club aims to run six adult Men's sides, a Ladies team and junior cricket for all ages from 5 – 16 across the Northamptonshire and Rugby District Leagues. With these teams the club aims to offer both serious and social cricket to suit anybody who would like to be involved, new players of all levels of experience and ability are welcome. Please contact Jim.Houghton@olivehorse.com or on 07748920176 for more information.

GUILSBOROUGH NEWS

ADVENT WINDOWS

On December 1st 2020 the first of the Guilsborough Church Advent Windows opened. This was followed by another window every day until Christmas Day. With exception of the 5th December when a host of angels appeared in the village and seven different windows opened that day.

This was a brilliant idea thought up by Allison Twigg and the Uplands Group of Churches. A way to help the community through difficult times during lockdown and keep the Christmas story alive although people could not attend in person at St Etheldredas Church.

A big thank you goes out to the 31 houses who offered to create a window. They were all very different and all extremely creative and entertaining for the many people who wandered around the village to look at them. Thanks also to Charlie Benn for sending out daily clues to help people find the windows and to Seatons Shop for handing out trail leaflets.

Combined with the beautiful angel stones painted and hidden around the village by children from the primary school and the pebble nativity painted by the talented Pam Townsend, they made a wonderful display in the church porch and perhaps a new tradition in the village? Thank you to all those who got involved.

Thank you also goes to all those who took the time to add their thoughts and feelings into the reflections Reflections Tree in the church yard.



Guilsborough Academy teacher honoured in the Queen's 2021 New Year's Honours list

An inspirational teacher from Guilsborough Academy has been awarded an MBE in the New Year's Honours list for services to the community.

Liz Mills, who teaches English, received the honour 'For services to the community in Market Harborough, Leicestershire particularly during the Covid-19 response.' The awards are made each year to people across all walks of life; from actors to sports men and women to inspirational people working within their community. The award focuses on Miss Mills' amazing work with the Jubilee Foodbank, where she has been the chairperson since 2019 as well as undertaking duties providing support to over 400 households across the region. Simon Frazer, Principal at Guilsborough Academy, said: "Liz is a real inspiration to our students.

"The effort that she goes to in supporting her community is mirrored by her commitment and dedication to young people in our academy. During the first lockdown, for example, she provided fantastic support to our A-Level English students.

"Above all else, however, she encourages people to be thoughtful and considerate about the world around them. It is a fantastic quality to have in a teacher, because she inspires students not just to get their best grades academically - but also to become young people who want to make a positive difference to their communities.

"We are all so proud of Liz. To be honoured by the Queen is a remarkable achievement!"

For more information about the Jubilee Foodbank, go to www.jubileefoodbankmh.uk or visit the Facebook page <https://www.facebook.com/jubileefoodbankmh/>.



HOLLOWELL & TEETON NEWS

HOLLOWELL AND TEETON PARISH COUNCIL

Things to look forward to in The Year Ahead!

1) Census 2021

Ready, steady, census

Census day is Sunday 21 March 2021.

The decennial census is almost upon us.

Households across Hollowell & Teeton will soon be asked to take part in the nationwide survey of housing and the population. It has been carried out every decade since 1801, with the exception of 1941.

Information from the digital-first census will help decide how services are planned and funded in your local area. This could mean things like doctors' surgeries, housing or new bus routes.

Households will receive a letter with a unique access code in the post, allowing them to complete their questionnaire online. Paper questionnaires will be available on request.

For more information, visit [census.gov.uk](https://www.census.gov.uk). [<https://www.census.gov.uk>]

2) All Change for Councils in Northamptonshire

Local government in Northamptonshire is changing. The existing system, which has been in place since the 1970s, is like a three-tier cake. The bottom layer is parish and town councils which typically cover one village or town. The middle layer is borough and district councils, which are responsible for things like planning applications, collecting the bins, tourism, and dealing with benefits. The top layer is the county council, which is responsible for things like social services, education, and highways.

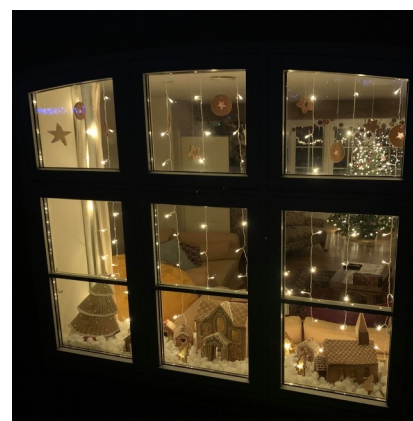
From 1 April 2021 the top two layers of the cake are being replaced with one layer, known as unitary councils. There will be two in Northamptonshire: North Northamptonshire Council, and West Northamptonshire Council. Parish and town councils remain as they are.

West Northamptonshire Council will cover the area currently covered by Daventry District Council, Northampton Borough Council, and South Northamptonshire Council. The area contains the towns of Northampton, Daventry, Towcester and Brackley and nearly two hundred villages and hamlets. West Northamptonshire Council will be one of the larger unitary councils in England. It will be responsible for all the services currently being provided in the area by the district, borough, and county councils.

If you are interested to find out more about the changes happening to local government in Northamptonshire please visit <https://futurenorthantswest>.

LOCKDOWN CHRISTMAS

It was lovely to see all the amazing advent windows around Hollowell during December. The village thoroughly enjoyed touring all the windows together on Christmas Eve (with appropriate distancing). We were also visited by the naughty Christmas Elf during three week ends in December, when our youngest residents were invited to follow the trail of chaos and track him down. There were fantastic colouring competitions (thank you for all your entries) and Father Christmas even took time during his busy Christmas Eve schedule to stop off and award some prizes. A big thank you to Lee and Becky Gane for organising all the fun.



HOLLOWELL & TEETON NEWS

JON COOK: BIRDING NOTES JAN 2021

For this month's birding notes I thought I'd write about a recent sighting at Hollowell Reservoir of six Whooper Swans. A beautiful and inspiring sight and sound to start the new birding year and, for me, a 'county tick'.



On the morning of January 2nd my wife Rachael and I had decided that a brisk circuit of the reservoir would help blow away the cobwebs and help kick-start the new-year exercise programme. I'd seen reports of six Whooper Swans at Pitsford Reservoir that morning; these had departed from there after a short stay. Not long before we set out for our walk, I received a birding news update saying that the same six birds had since arrived at Hollowell Reservoir.

Arriving at Guilsborough Bay, I was delighted to see that the six birds were still there in a loose, line-astern formation, moving together around the bay, stretching their necks forward and back, nodding their heads in turn and giving a soft bugling call. We watched for a couple of minutes, in which I managed to get a few photos. We then headed on around the north end of the reservoir. As we walked down the north-eastern shore, in line with Guilsborough village, I noticed that the Whoopers had now taken flight. Shedding droplets of water as they went, they headed up the reservoir and past us, flew over the feeder stream, now arranged in a straight, evenly spaced horizontal line; they then turned to the north and were gone.

With their scientific name of *Cygnus cygnus*, I like to think that this species can be seen as the original (or perhaps the ultimate?) swan. Similar in size to, but somehow wilder in appearance and more purposeful than the much commoner resident Mute Swan, Whoopers are scarce winter visitors to the this part of the UK, spending the summer breeding season in the tundra of the Arctic Circle. Key identification features in addition to the ones mentioned above include a yellow and black wedge-shaped bill, and in flight, almost silent wings compared to the throbbing hum of the Mute Swan. The even scarcer Bewick's Swan, which also has a yellow and black bill, is noticeably smaller. Whooper Swans may be present in Northamptonshire until March, and there are currently a few mobile parties being seen at various locations in the region, so there's every chance of a repeat appearance over the next couple of months. Good luck - and happy birding - in 2021.

Jon Cook, Northamptonshire county bird recorder.

Email: joncooknorthantsbirds@gmail.com

FUNDRAISING FOR THE AIR AMBULANCE

During the first lockdown I was asked if I had any handmade birthday cards for sale.

Word spread throughout the village and so my fundraising for the Air Ambulance began.

On November 21st, 34 households came to my drive to look at a variety of handmade Christmas items including cards, tags, bags and boxes. A fellow villager, Jayne, had also made soap.

As a result, the Air Ambulance received a £355 donation which will soon be followed by another donation, as further requests for soap and birthday cards have raised another £65.

On behalf of the Air Ambulance I would like to thank you all for your support.

Cheryl Charter





THINK DIFFERENTLY

HOUSE PLANS

PLANNING APPLICATIONS

BUILDING REGS

For your **FREE** initial consultation

01455 203527

07764 603017

plans@abstractlimited.co.uk

OR VISIT OUR WEBSITE

www.abstractlimited.co.uk



Design & Plan



Planning Appl.



Building Regs

HOLLOWELL & TEETON NEWS

REMEMBERING JEMMA TATE OF SPRING CLOSE HOLLOWELL

Friends, family and colleagues met at the Greenhaven Woodland burial ground on the 29th December to say farewell to Jemma Tate of Spring Close Hollowell.

The service led by Paul Charter contained tributes from family and colleagues and included music loved by Jemma and one of her favourite nonsense poems. "The Pobble who had no toes" by Edward Lear.

Jemma was born in 1984 to Rachel and Andrew at Northampton General Hospital where she was later to train as a nurse. At that time, they lived in the Cold Ashby Road in Guilsborough, moving to Spring Close Hollowell a year later.

Jemma attended Guilsborough Primary School moving later to Spratton Hall School, completing her education at Quinton House School.

Jemma worked at Kettering General Hospital as a research nurse on what they call a "sleeping" project in conjunction with the World Health Organisation preparing for what would happen should a Pandemic occur. As you can imagine, this project was awakened suddenly when Covid 19 arrived in March of last year.

Jemma spent her time during the pandemic working late into the night developing and changing protocols so that her colleagues had the latest and best operating procedures to ensure their safety.

Prior to her research work Jemma was a specialist nurse in the Intensive Care Unit at Kettering Hospital. Colleagues shared how she was so caring, patient focused and meticulous in her preparation, planning and delivery of compassionate care. One said that if they ever needed treatment in ICU, Jemma would be the nurse they would want to care for them.

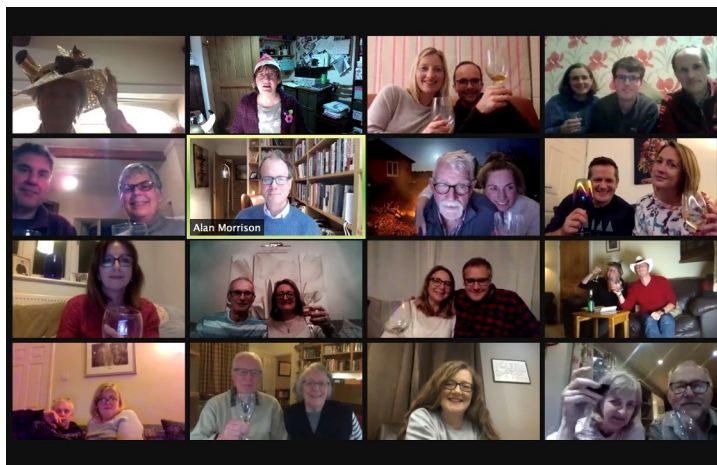
Jemma shared her mum's love of horses. Her first horse Finny came from Kathy Crisp and it was at her stable that Jemma developed her horse care skills. Later she purchased Bree her long-term horse who still lives at Pastures Farm.

Jemma was a passionate online computer gamer, a pastime she enjoyed with her partner Jamie, competing with players around the world.

She also had a love for Staffordshire Bull Terriers, her own dogs being Toffee and Tango and there is a Just Giving page for the Staffordshire Bull Terriers Rescue Group set up in Jemma's memory.

Jemma's death at the age of just 36 has left a massive hole in the lives of all those who knew her. Her colleagues at Kettering say she is an irreplaceable member of their ICU and her family and her parents Andrew and Rachel and her partner Jamie are totally devastated by their tragic and sudden loss.

VIRTUAL QUIZ NIGHT



Congratulations to Team "We Got Nothing" who narrowly defeated Team "Clueless" to win Hollowell & Teeton's first virtual quiz night. Twenty eight residents took part in this rather experimental evening, which included silly hats, and team "breakout rooms" and required an encyclopedic local knowledge. Huge thanks to our three quiz compilers, Jon, Paul and Hugh, our compère, Graham and to Alan for managing all the technical stuff. It was great fun and so wonderful to be able to wave at friends and neighbours. One of the rounds was the postbox round featured on the front page.— how did you get on?

Solution to the postbox quiz - on the front page

A Letter From

Where are these local post boxes ?



THORNBY NEWS

A BRIEF HISTORY OF ... THORNBY HALL



Thornby Hall, on the Naseby road out of Thornby, was originally built in the 17th century with 19th and 20th century additions—the C17 house was extensively enlarged and remodelled in the C20 for the Wills (tobacco) family who owned the house from 1911 to 1984/5.

Alan Worthington and his family lived in Thornby from 1985-1995. He had a professional association with the Hall and writes:

“In 1911 Thornby Hall was purchased by Arnold Stancomb Wills (Captain A.S. Wills) from the Pender family. Arnold Wills’ grandfather was Henry Overton Wills who, with his brother William Day Wills (hence W.D. & H.O. Wills) in 1830 had renamed the tobacco company that had been founded in Bristol in 1786 by their father, also Henry Overton Wills. This had begun as a small tobacco shop, but under the brothers became the first mass producer of ready-made cigarettes in the UK. Thornby Hall passed down through generations of the Wills family up to 1985, at which time it belonged to (another) Arnold Wills (R.A. Wills) who was a great nephew of Captain A.S. Wills.

“In 1985 Thornby Hall was purchased by the Peper Harow Trust (rebranded in more recent years Childhood First). I was appointed as its first Director in 1985, to set up a therapeutic community and school for young people with complex emotional needs and continued in that role until early 1995. Thornby Hall community and school continued for over 30 years, up to its closure in 2017.

“Just prior to the Peper Harow Trust taking it over, Thornby Hall had been operating as a Health Farm. Arnold Wills had continued to live there I believe, and my impression was that he had been quite a reclusive and private person, but Thornby Hall and its grounds had been used regularly by the wider Wills family – whose centre of gravity was in Wiltshire - as a weekend “hunting lodge”. One relic of the Health Farm, I remember, was a large (and rather uninviting) “jacuzzi room” at the rear of the house, but perhaps its most noteworthy legacy was Thornby Herbs, (although this may also have preceded the Health Farm). For many years, the Head Gardener had been Stan Barton, who had developed and cultivated a truly stunning herb garden, which is very evident in photos from that time, and these were sold from a small shop, set up in the kitchen garden. Stan had by then become a very knowledgeable authority on herbs, respected both

locally and nationally. He had grown up locally and continued to live locally in Naseby after his eventual retirement”.

THORNBY HALL TODAY:

In 2017 Thornby Hall became home to the Nagarjuna Kadampa Meditation Centre and the World Peace Café. Set in 17 acres of grounds with woodland walks, parkland and a lake. Nagarjuna KMC have said that in accordance with National Lockdown restrictions, the Meditation Hall will open for communal worship only, which includes all retreat sessions and pujas, for which pre-booking is required. It is not necessary to book in advance for the lunchtime guided meditation - track and trace information will be taken for all attendees. Meditation Hall doors will open 15 minutes before the scheduled start time. The spiritual programme continues to be streamed online. Information available at: www.meditateinnorthants.com The grounds will remain open for exercise and the World Peace Cafe will be open for take away drinks, cakes and food 11am - 3pm. The shop and main building are closed to the public.

If you have been diagnosed with Covid-19 or have developed symptoms within the last 14 days, or, if you live with/or have been in contact with someone who has been diagnosed or had symptoms of Covid-19 within the last 14 days, please do not visit the Centre or grounds.



M J Burdett
Plumbing

Plumbing & Heating Engineer

Central heating installations, repairs & service

Oil fired Boilers supplied & fitted

Full bathroom installations

For all your plumbing requirements

No job too small

Over 20 years experience

Call Mark on:

07841 572458

01604 740704

mjburdettplumbing@btinternet.com

I write this as the New Year has just broken and it is tradition at this time of year to wish each other a very Happy New Year. So, let me begin by doing so. I hope that 2021 will be a good one. Many of us may think that it at least has to be better than 2020 was! What about happiness; what is it that we are wishing for each other when we say these words? For some it may be simply a greeting. For others, a genuine wish that those we greet really will enjoy a good and trouble-free year. Eleanor Roosevelt famously said, "Happiness is not a goal...it's a by-product of a life well lived." As we enter and travel through a New Year what might lives well lived look like?

I think that this year in the Villages of the Uplands Group we have seen beautiful glimpses of lives well lived even in the most challenging of times. Our communities have been drawn together, supporting each other, with willing volunteers helping in times of need. We have both supported and been supported by our local shops, schools, the surgery and the wider NHS.

Many of us had to celebrate Christmas differently, with plans changing suddenly and familiar traditions having to be set aside. I am so very grateful for all those who took part in the Church Advent Windows Trails and the Angel Hunts in so many of the villages. I know they brought delight and Christmas joy to many, even if we did have to dodge the winter rain to see them. Thank you to all who helped the churches spread a little joy in the community and WOW – we have some amazing creativity in our midst. Perhaps these trails could become a new Christmas tradition here; a way of lifting the spirits in the dark days of winter.

Yet Christmas is past, strange as it was and for many the question usually turns to what next? For many the first few months of the year is a challenging time. The days remain dark and the winter weather sets in. Someone worked out that the 18th January, labelled Blue Monday is the all-time low. It is the day the credit card bill arrives. The transient happiness of the festive season can seem to disappear.

May I suggest three things?

Hope and hopefulness can make a big difference. Remaining hopeful can be a challenge – when it is so difficult to plan into the future. However, the news that Covid vaccinations have begun and that there are those that we know who have received it is a sure sign that there is an end to our current situation. The year will get better... Thinking this way is a hopeful choice.

Contentment is surely another ingredient. Yet we have found small ways of finding contentment. Meeting with those we love over zoom; going for a walk with a friend and exploring the wonderful countryside we are blessed to live in; picnics in the garden or hot chocolate in front of the fire. Simple? Yes. Contentment is noticing and enjoying the moment.

Thankfulness is the third quality that comes to mind. Oprah Winfrey said: "Be thankful for what you have; you'll end up having more. If you concentrate on what you don't have, you will never ever have enough."

There is a spiritual discipline in this kind of happiness. In pausing each day to reflect and remember the things that have brought you joy and in knowing that to do this can lift your spirits even in the darkest of times. Learning as you do, as St Paul wrote, the secret of being content in any and every situation and giving thanks. It is a process. It promises a happiness rooted in hope, contentment, thankfulness and, for me, ultimately in God himself.

With every blessing,
Allison



CHURCH PLANNER

At the time of the Village Link being prepared for publication, it was not possible to confirm the pattern of services in the Uplands Group of Churches for February and March.

Please check with our Website or contact the rector or churchwardens. Notices will also be displayed in church.

<http://www.uplandsgroupchurches.org.uk>

Reverend Allison Twigg
revallisontwigg@gmail.com 01604 846099

MOTHERING SUNDAY 14TH MARCH

Saint Valentine known as **Saint Valentine of Rome** was a widely recognized 3rd-century Roman saint commemorated in Christianity on February 14. From the High Middle Ages his Saints' Day has been associated with a tradition of courtly love. He is also a patron saint of epilepsy. Saint Valentine was a clergyman – either a priest or a bishop – in the Roman Empire who ministered to persecuted Christians. He was martyred and his body buried at a Christian cemetery on the Via Flaminia close to the Ponte Milvio to the north of Rome, on February 14, which has been observed as the Feast of Saint Valentine (Saint Valentine's Day) since 496 AD.



K.I. Gardenalia and Salvage

All types of decorative and practical items for your garden. Terracotta pots, galvanised containers, planters and garden tools etc.

Garden items bought and sold.

Delivery available.

Stock/price list available or to view call

**Kath on 01604 505451 (Creton) or
07931782316**

Email: kathleenisom123@gmail.com



HAYLEY CLARK
a c u p u n c t u r e

Treating the person not just their symptoms

Patients seek acupuncture to address a wide variety of conditions including:

Post-Covid Symptoms - Stress - Anxiety - Menopause -
Musculoskeletal aches and pains - Insomnia - Migraines -
Mental and Emotional Wellbeing

Find out more with a FREE 20 minute initial consultation

Professional Licentiate in Acupuncture. Based in Creton

Call/text: 07598 354586

Email: hayleyclarkacupuncture@gmail.com

www.hcakupuncture.co.uk



British
Acupuncture
Council Member

Staying COVID-19 Secure in 2020

I confirm I have complied with the Government's
guidance on managing the risk of COVID-19



professional
standards
authority
accredited register

- Oil Boilers
- Oil Agas
- Commissioned
- Serviced
- Repaired

Sean 07759 630068

Coral 01604 780021

www.agawise.co.uk

e: sean@agawise.co.uk

AGA WISE
BOILER SERVICE





ELECTRIC VEHICLES

YOUR QUESTIONS ANSWERED BY
LOCAL EV SPECIALIST,
MAGNUS ERLANDSEN



Q. Where can I charge an electric car?

The easiest place to charge is at home. If you've got a driveway or garage you can easily get a charge point installed. You can use a standard 3-pin plug to charge, but a charge point is much quicker.

Q. What if I want to drive to France?

There are now more than 210,000 charge points across Europe, with 30,000 charge points in over 11,000 locations across the UK. Many of these charge points are simple to use, just tap a contactless card and start charging! I've found that a lot of the charge points are close to restaurants or shops, giving you the opportunity to get a coffee or a bite to eat whilst you charge.

Q. What about the range of an electric car?

Currently, the range of an electric car is less than a petrol/diesel car, however technology is advancing quickly, increasing the battery capacity and making the motors more efficient, thus increasing the range. Research shows that in the UK, the average journey is about 10 miles (or 8.9 miles in the East Midlands). Even the smallest of electric cars (such as the VW e-Up!) have a range of 70-80 miles, making journeys in and out of work, and even into London possible.

Q. What sort of maintenance is there on an electric car?

With so little moving parts, there is much less maintenance required on an electric car. Apart from charging the car, topping up the washer fluid and changing the tyres when necessary, there isn't much else to do.

What I've found with so many electric vehicles is that many manufacturers provide an 8-year warranty on the battery and the motors, with a mileage cap of around 100,000. This certainly gives me plenty of confidence in the cars.

Q. Are they expensive to run?

Whilst they are currently more expensive to buy than a similar petrol/diesel car, they cost much less to run. With £0 road tax, no congestion charge, cheaper 'fuelling' and so many other benefits in different counties (such as free parking in Milton Keynes).

Charging an electric car is very cost effective as well. At home, with the average price of electricity at £0.15 per kWh (kilowatt hour), charging a top of the line electric vehicle with a 100kWh battery is no more than £15, for 250-300 mile range. Whilst public chargers are a little more expensive, they are still cheaper to use than filling a car up with petrol/diesel.

Q. The Government aren't banning new petrol and diesel cars till 2030. Why should I change to electric now?

There really is no time like the present. Whilst the ban doesn't happen till 2030, climate change is happening now and electric vehicles are currently the best solution to reducing emissions from transportation, as electricity is being produced from renewable sources, such as wind and solar. The people that I know who have gone to electric say they wouldn't go back, for more than one reason.

If you've got questions on electric vehicles then please do reach out to me: magnus@erlsvehicles.co.uk or 07943 384711

census
2021

READY, STEADY, CENSUS

The decennial census is almost upon us.

Households across Northamptonshire will soon be asked to take part in the nationwide survey of housing and the population. It has been carried out every decade since 1801, with the exception of 1941.

Information from the digital-first census will help decide how services are planned and funded in your local area. This could mean things like doctors' surgeries, housing or new bus routes.

Households will receive a letter with a unique access code in the post, allowing them to complete their questionnaire online. Paper questionnaires will be available on request. Census day is March 21.

For more information, visit census.gov.uk

ALPHABETICAL ADVERTISERS

- Abstract Limited, Architects - p15
- Aga Wise - p19
- J.M. Billings Plumbing & Heating - p4
- Brixworth Osteopathic Clinic - p2
- Carrie Billings Nutrition & Kinesiology - p8
- Compass Energy - p2
- Creton Village Shop - p2
- Dawn Mallard Hairdressing - p6
- ERLS, Electric Vehicles - p8
- Ewe Move Sales and Lettings - page 7
- Gardenalia - p19
- Hayley Clarke Acupuncture - p19
- LocBox storage solutions - p11
- MJ Burdett Plumber - p17
- Merrick School of Driving and Towing - p10
- Wills Direct - p4